



Devon & Cornwall Police
Building safer communities together

Chief Constables Performance Report

With a focus on Cornwall & Isles of Scilly

July 2014

**To provide a high quality
public service focussed
on reducing harm to the
most vulnerable**



Priority 1: To make our area a safer place to live work and visit - reducing the likelihood that people will become victims of crime

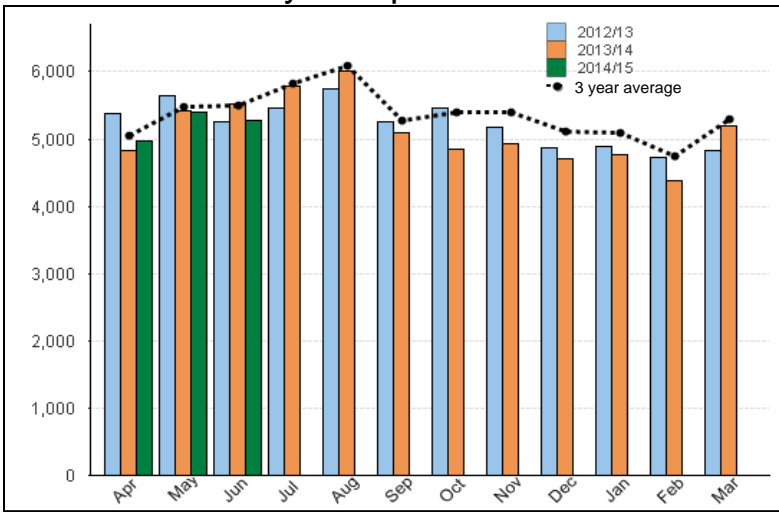
Victim Based Crime

- Homicide
- Violence with injury
- Violence without injury
- Robbery
- Burglary Dwelling
- Burglary non-dwelling
- Vehicle offences
- Shoplifting
- Other theft
- Criminal damage
- which are not Domestic Abuse
- or Hate crimes

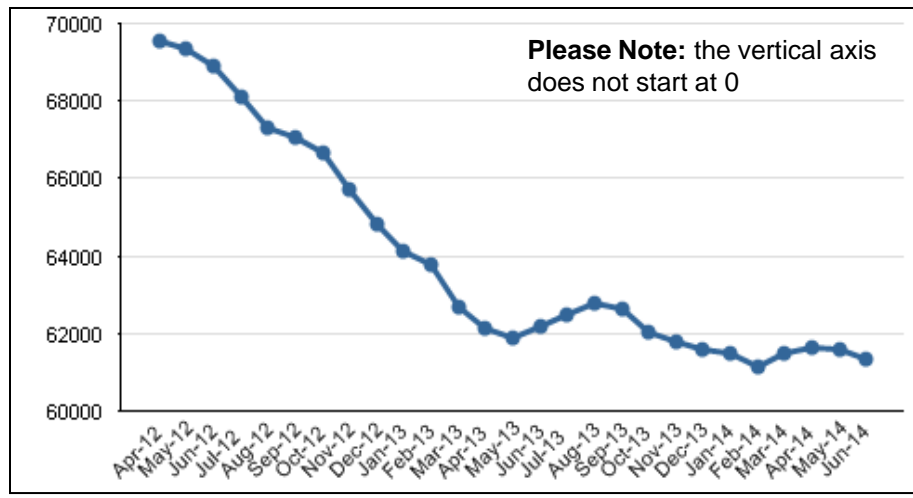
Attainment: Improvement in performance expected

- Long term reductions in acquisitive crime (burglary, robbery and vehicle crime)
- Performance challenge around theft – including shoplifting (national trend) and violence without injury

Monthly Comparisons



12 Month Rolling Trend Over Time



Priority 1: To make our area a safer place to live work and visit - reducing the likelihood that people will become victims of crime

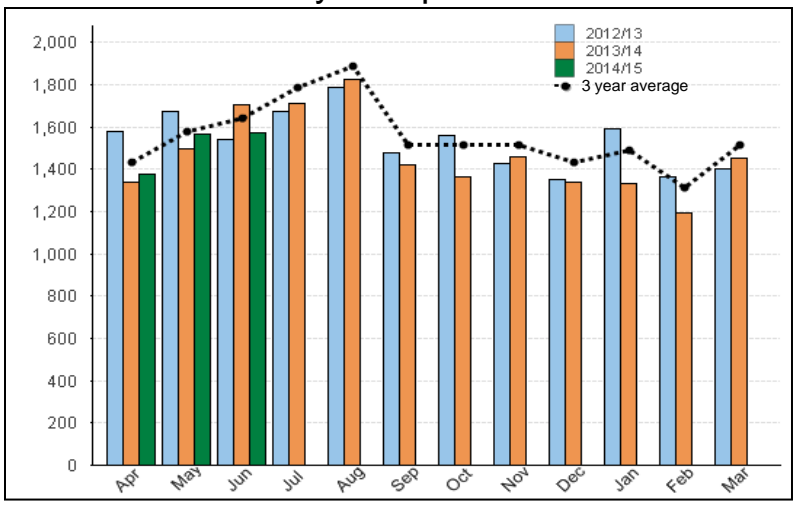
Victim Based Crime – Cornwall & Isles of Scilly

- Homicide
- Violence with injury
- Violence without injury
- Robbery
- Burglary Dwelling
- Burglary non-dwelling
- Vehicle offences
- Shoplifting
- Other theft
- Criminal damage
- which are not Domestic Abuse or
- Hate crimes

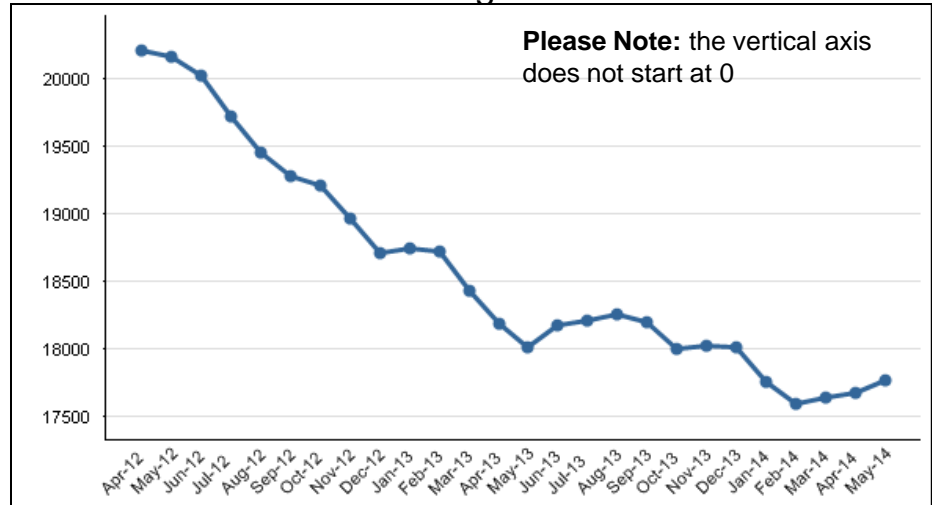
Attainment: Improvement in performance expected

- Long term reductions in acquisitive crime (burglary, robbery and vehicle crime)
- Performance challenge: Violent crime (particularly violence without injury), shoplifting, Summer policing.

Monthly Comparisons



12 Month Rolling Trend Over Time



Priority 1: To make our area a safer place to live work and visit - reducing the likelihood that people will become victims of crime

Domestic Abuse Non-Crime Incidents and Crimes

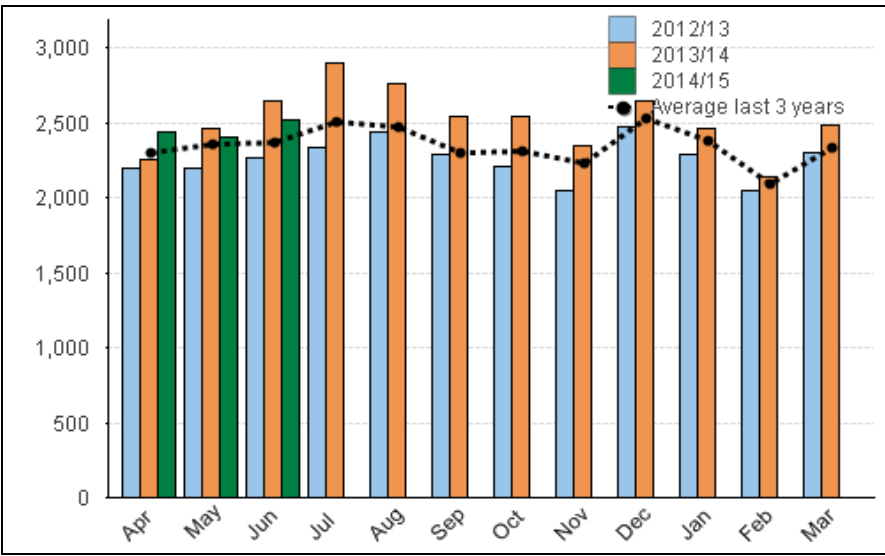


Recorded domestic abuse crime (all crime types) and domestic abuse non-crime incidents. Individual crimes and incidents are flagged at source as to whether they are also Domestic Abuse.

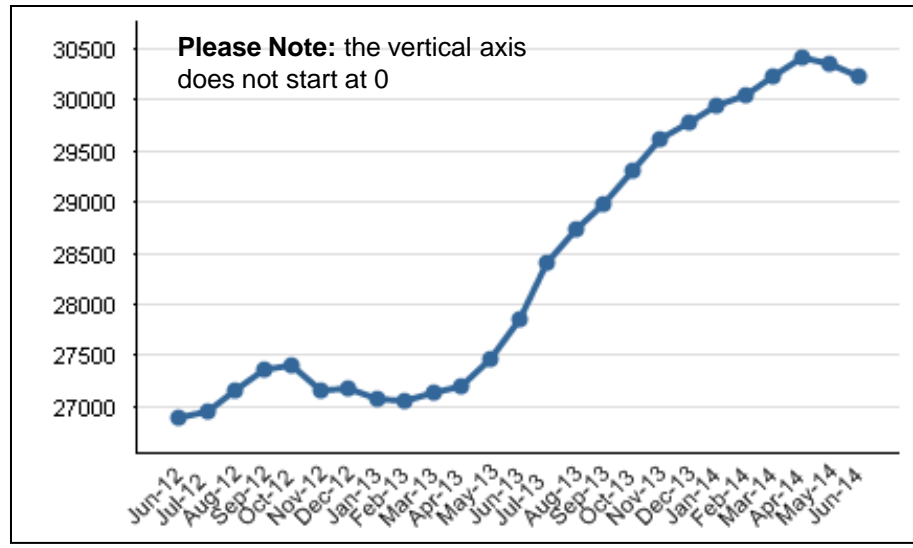
Attainment: Increased public confidence to report

- Increased reporting of Domestic Abuse over time, with supporting outcomes measures for crimes available.
- Repeat victimisation and victim satisfaction measures are in development
- HMIC Inspection published and being acted upon
- Action plan being monitored via Strategic Board
- Specific Sexual Offence and Domestic Abuse Investigation Teams operational
- Safeguarding pilot commenced

Monthly Comparisons



12 Month Rolling Trend Over Time



Priority 1: To make our area a safer place to live work and visit - reducing the likelihood that people will become victims of crime

Domestic Abuse Non-Crime Incidents and Crimes - Cornwall & Isles of Scilly

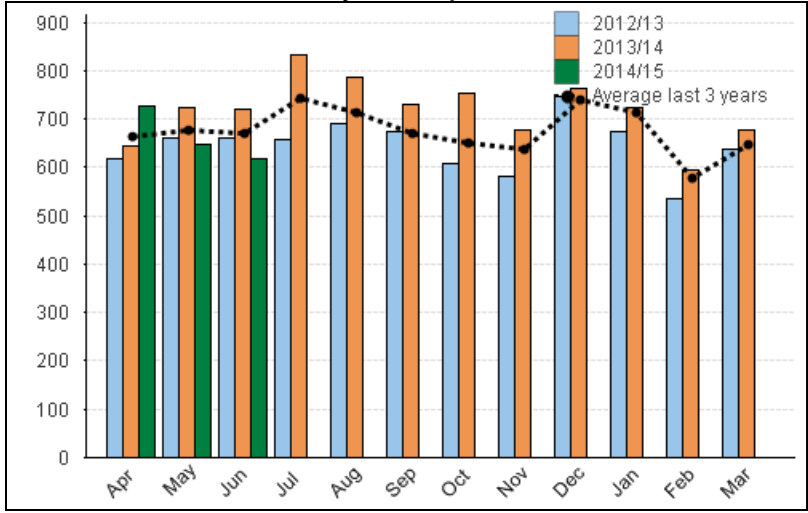


Attainment: Increased public confidence to report

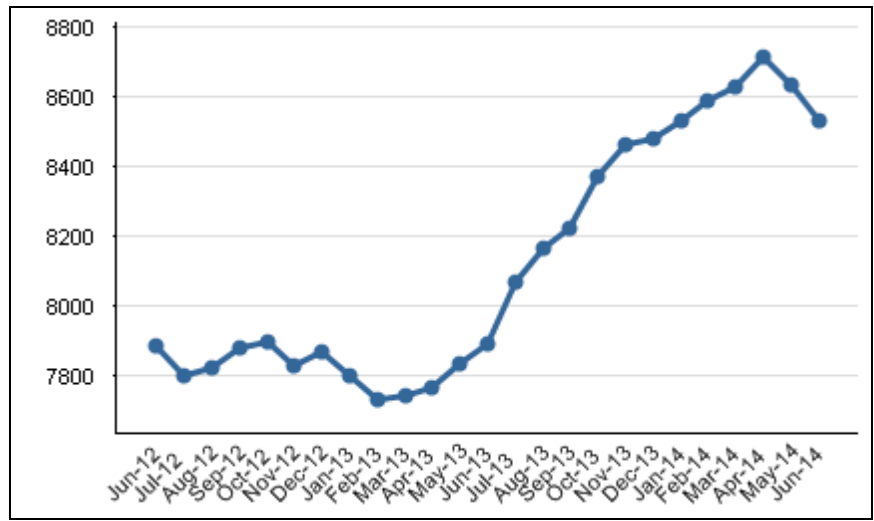
Recorded domestic abuse crime (all crime types) and domestic abuse non-crime incidents. Individual crimes and incidents are flagged at source as to whether they are also Domestic Abuse.

- Increased reporting of Domestic Abuse over time, although reductions in last 2 months, with supporting outcomes measures for crimes available.
- Action plan developed and monitored
- Specific Sexual Offence and Domestic Abuse Investigation Team operational

Monthly Comparisons



12 Month Rolling Trend Over Time



Rape and Other Sexual Offences

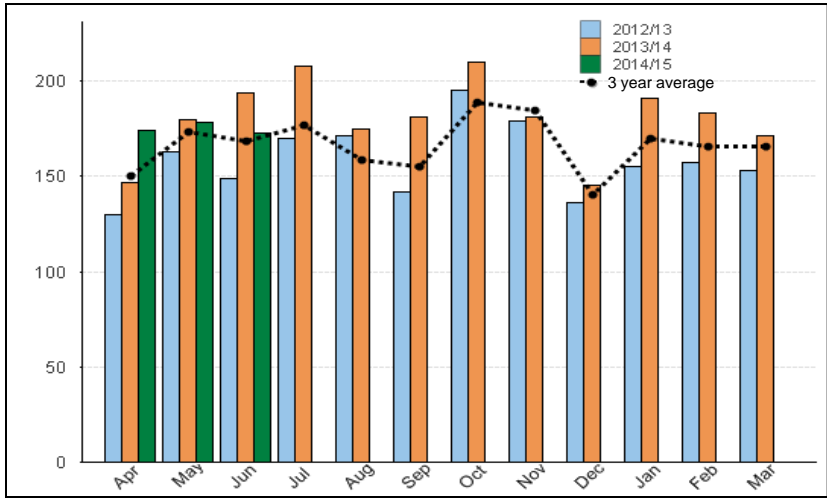


Rape and other sexual offences (including domestic abuse)

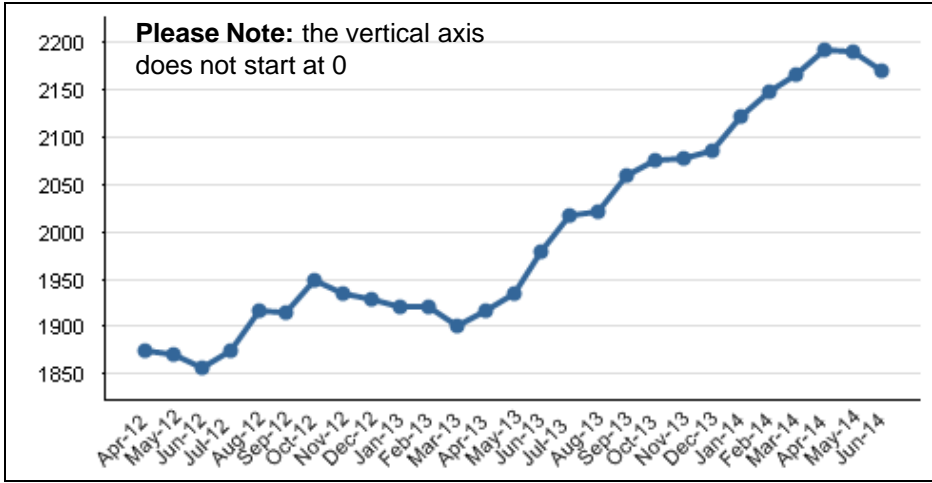
Attainment: Increased public confidence to report

- Increased reporting of sexual offences over time, with supporting outcomes measures for crimes available.
- Victim satisfaction measures are in development
- Impact of Historic and Current Reporting has been analysed
- Action plan being monitored via Strategic Board
- Specific Sexual Offence and Domestic Abuse Investigation Teams operational
- Safeguarding pilot commenced

Monthly Comparisons



12 Month Rolling Trend Over Time



Priority 1: To make our area a safer place to live work and visit - reducing the likelihood that people will become victims of crime

Rape and Other Sexual Offences - Cornwall & Isles of Scilly



Rape and other sexual offences (including domestic abuse)

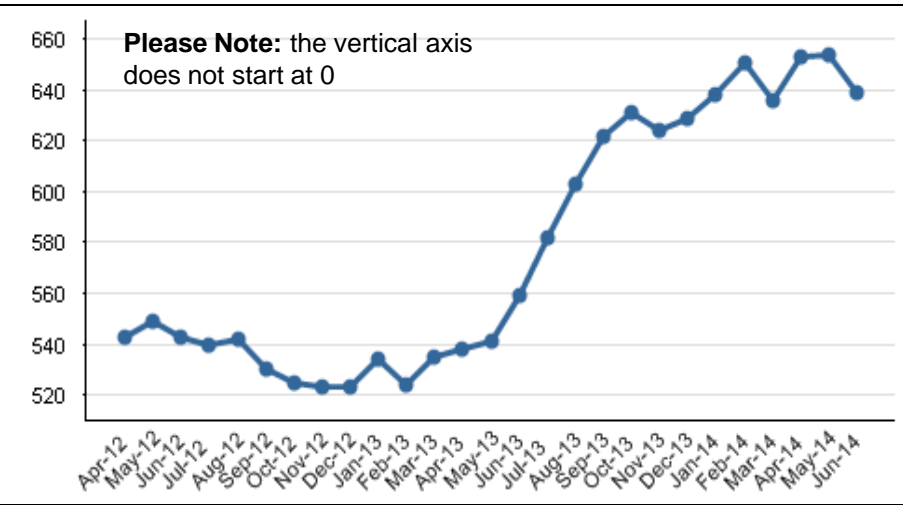
Attainment: Increased public confidence to report

- Increased reporting of sexual offences over time, with supporting outcomes measures for crimes available.
- Impact of Historic and Current Reporting has been analysed
- Action plan developed and monitored
- Specific Sexual Offence and Domestic Abuse Investigation Teams operational

Monthly Comparisons

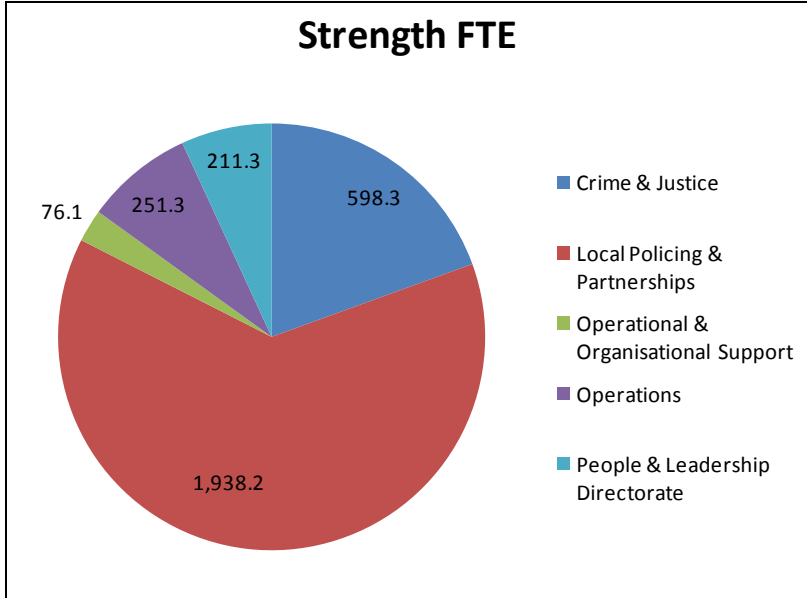


12 Month Rolling Trend Over Time



Police Officer Establishment (over 3000)

Attainment: Current good performance should be maintained



On 30th June 2014 there were 3,076.2 FTE officers

Note: Does not include Career Breaks nor Secondments

There are:

63 officers on maternity leave (1.2% of officers)

199 officers on Recuperative & Restricted Duties (3.7% of officers)

Additional to the 3,076.2 total above we have 24.0 on secondment (including for example Counter terrorism and HMIC) and 16.9 on career breaks

Violence Against the Person Offences

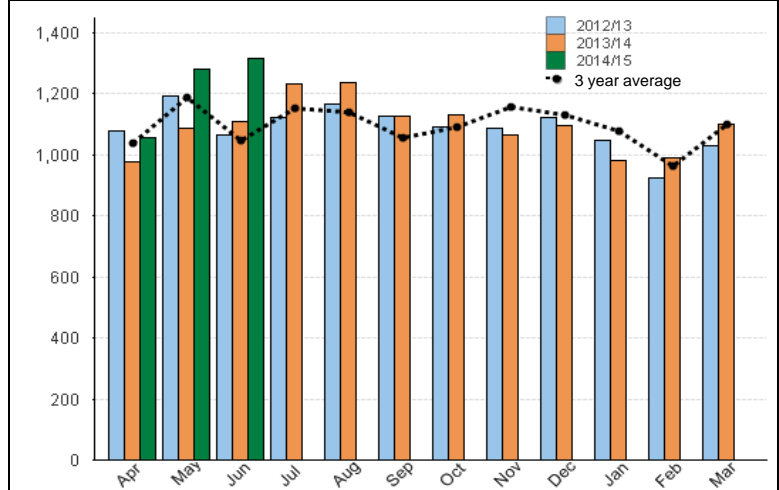


Homicide
 Violence with injury
 Violence without injury
 (All excluding domestic abuse offences and hate crime)

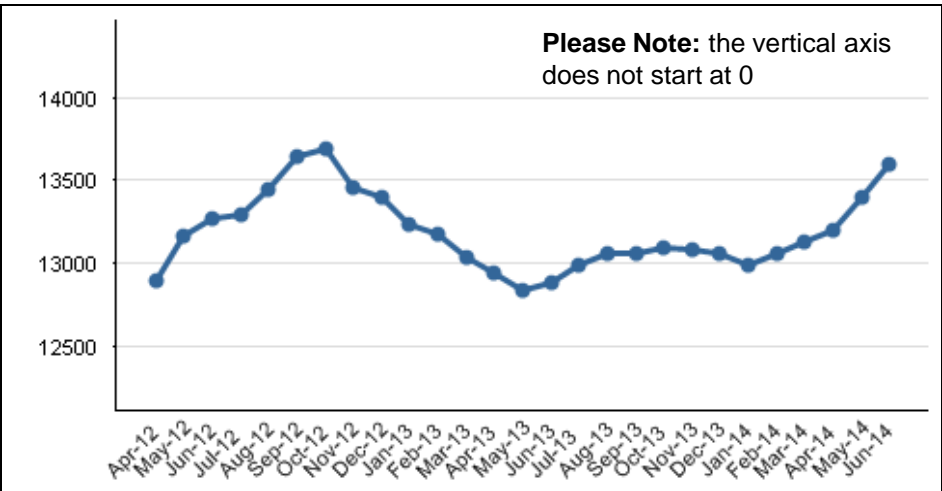
Attainment: Transformation of performance is required

Geography	Recorded Crimes 12 Months to 30/06/14	Per 1000 Population	Recorded Crimes 12 Months to 30/06/13	Per 1000 Population
West Cornwall LPA	1,914	7.2	1,871	7.1
East Cornwall LPA	1,872	6.8	1,903	6.9
Cornwall & Isles of Scilly	3,786	7.0	3,774	7.0
Plymouth LPA	3,263	12.6	3,052	11.8
South Devon LPA	2,833	8.3	2,517	7.4
Exeter, East & Mid Devon LPA	2,249	6.8	2,236	6.7
North & West Devon LPA	1,470	6.9	1,300	6.1
Devon	6,552	7.4	6,053	6.8
Force	13,601	8.1	12,879	7.7

Monthly Comparisons



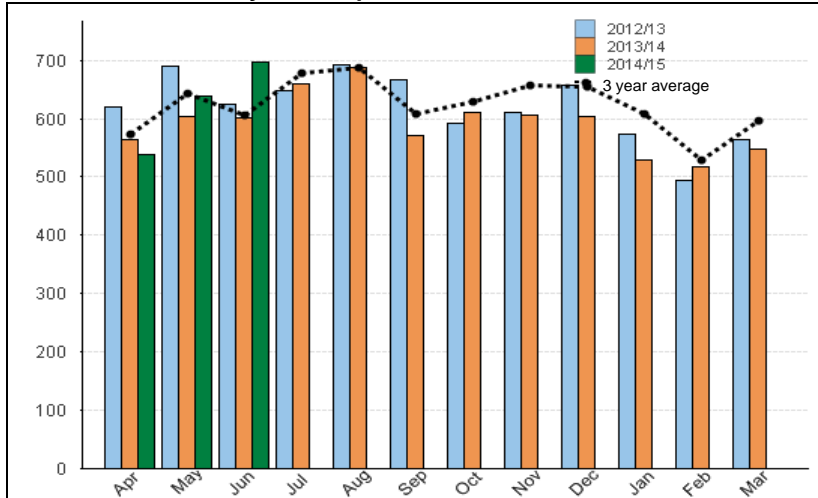
12 Month Rolling Trend Over Time



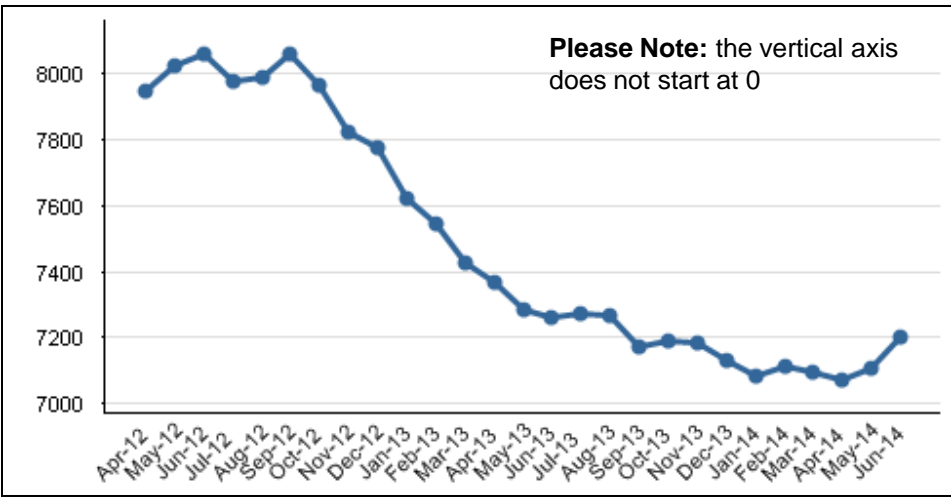
Violence Types

Violence With Injury (Not DA): e.g. GBH, ABH: Injury sustained or Intent to cause injury

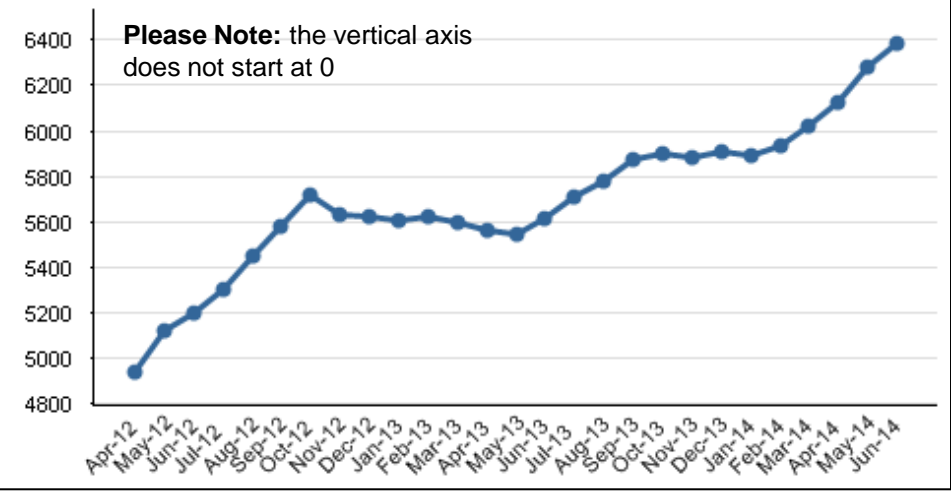
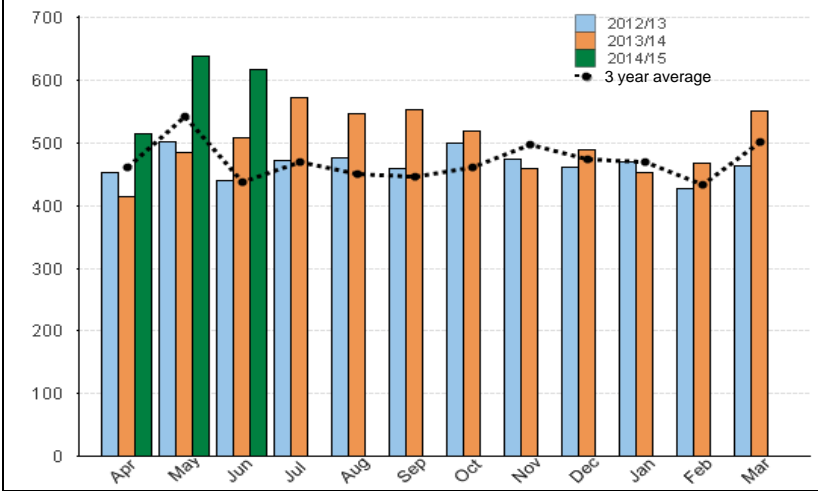
Monthly Comparisons



12 Month Rolling Trend Over Time



Violence Without Injury (Not DA): e.g. Common Assault: No visible mark or injury sustained



Violence Against the Person Offences - Cornwall & Isles of Scilly

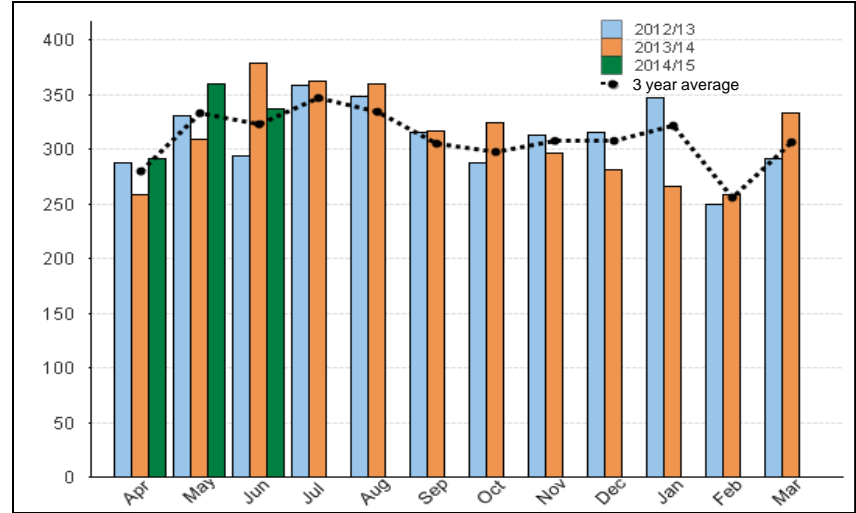


Attainment: Transformation of performance is required

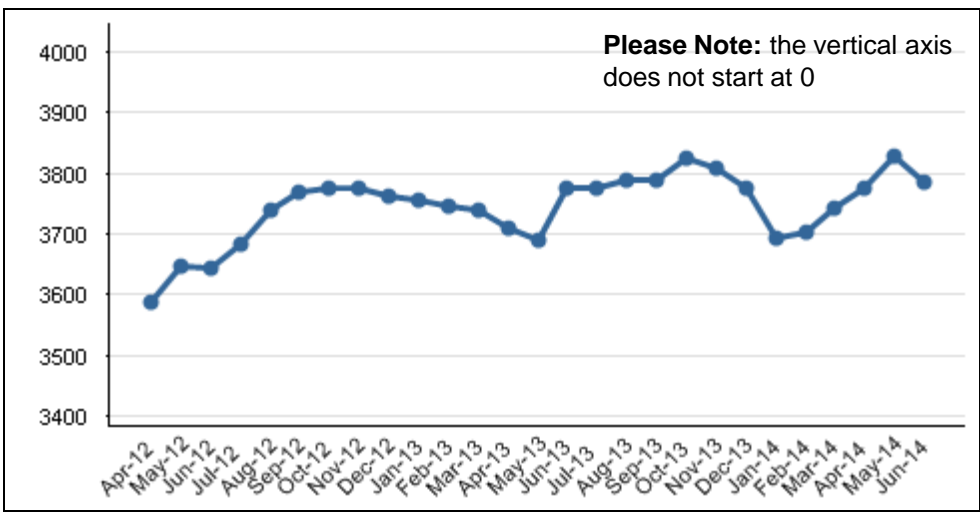
Homicide
Violence with injury
Violence without injury
(All excluding domestic abuse offences and hate crime)

		% change 12 months to 30/06/2014 compared to previous year		
LPA	Sector	Violence Against the Person (Non DA)	Violence With Injury (Non DA)	Violence Without Injury (Non DA)
West Cornwall LPA	Penzance & St Ives Sector	-1.8%	-0.7%	-3.3%
	Falmouth & Helston Sector	3.8%	3.6%	3.5%
	Camborne Sector	8.0%	6.9%	8.8%
	Truro Sector	-2.3%	-17.9%	20.4%
East Cornwall LPA	Newquay Sector	-1.9%	-13.3%	21.2%
	Bodmin Sector	-12.3%	-14.7%	-8.7%
	St Austell Sector	6.4%	-7.8%	26.3%
	Liskeard Sector	-0.9%	-0.7%	-1.2%
	Launceston Sector	-3.3%	-8.4%	3.3%
Total for Cornwall & Isles of Scilly		0.3%	-4.8%	6.9%

Monthly Comparisons



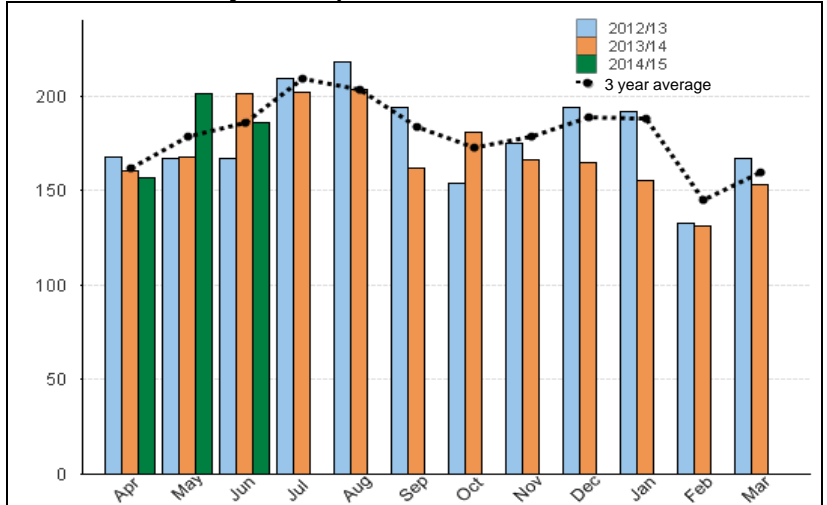
12 Month Rolling Trend Over Time



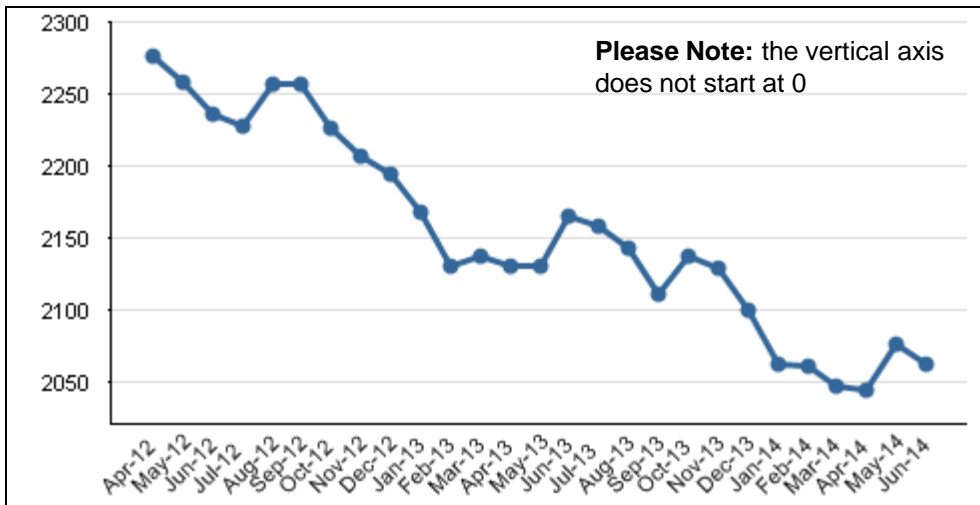
Violence Types - Cornwall & Isles of Scilly

Violence With Injury (Non DA)

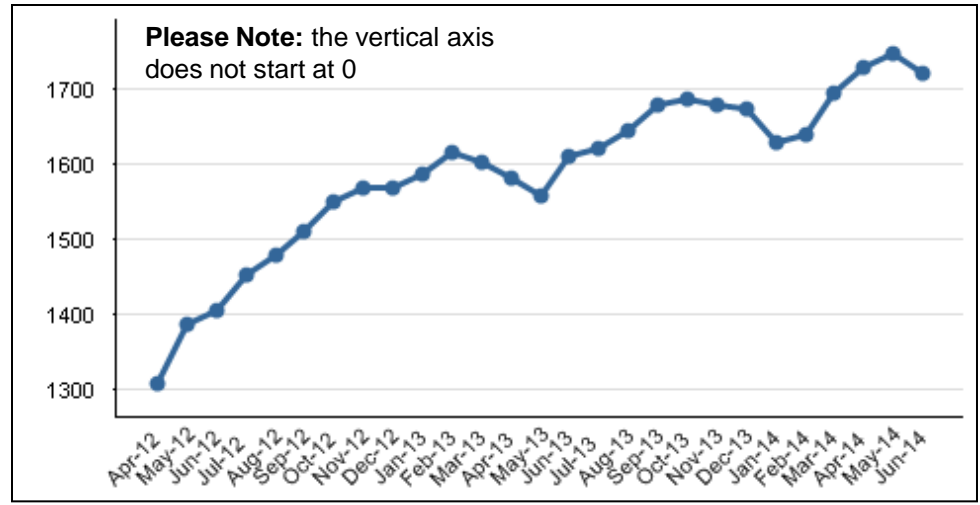
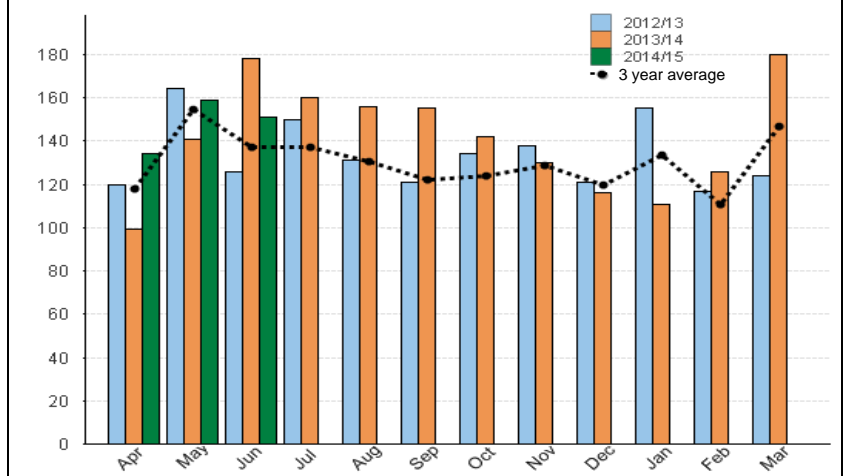
Monthly Comparisons



12 Month Rolling Trend Over Time



Violence Without Injury (Non DA)



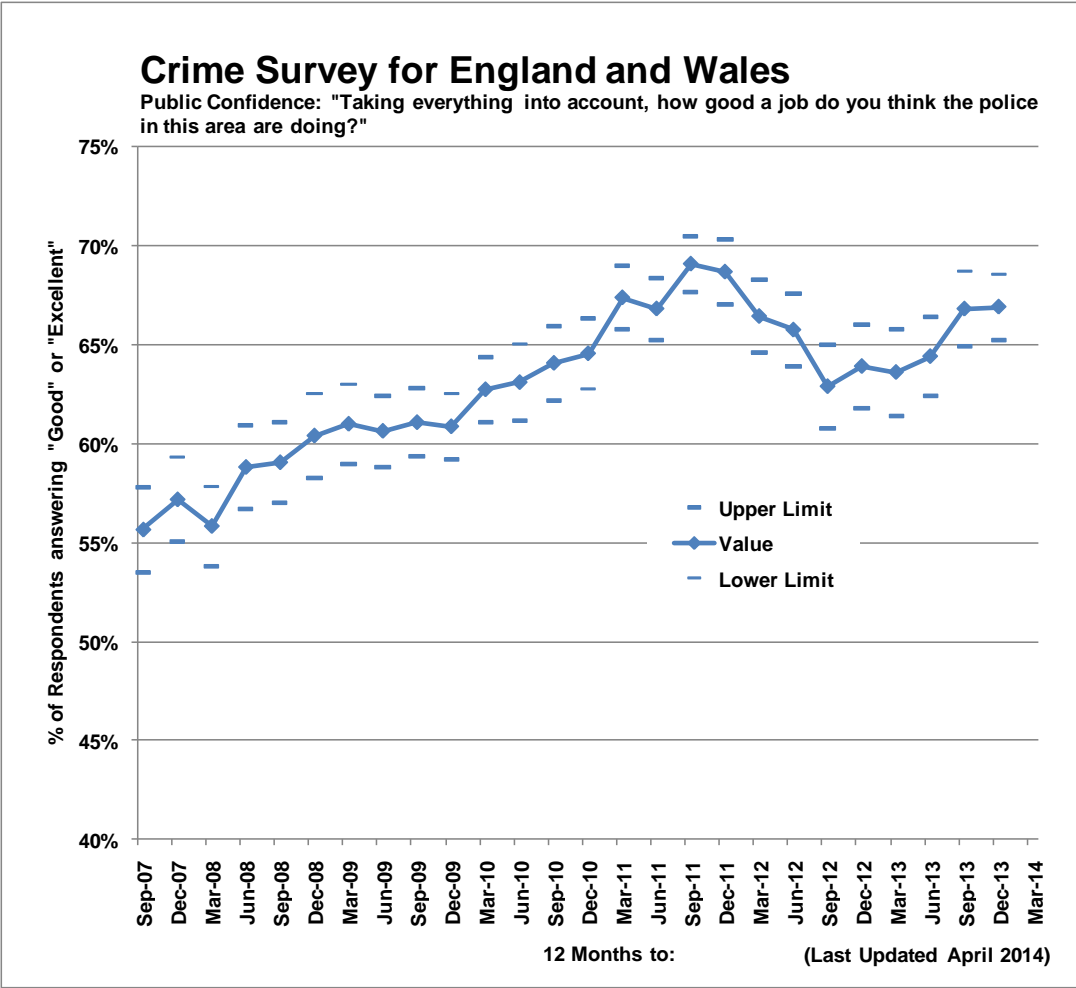
Public Confidence



Taken from the Crime Survey for England and Wales question: "Taking everything into account, how good a job do you think the police in this area are doing?"

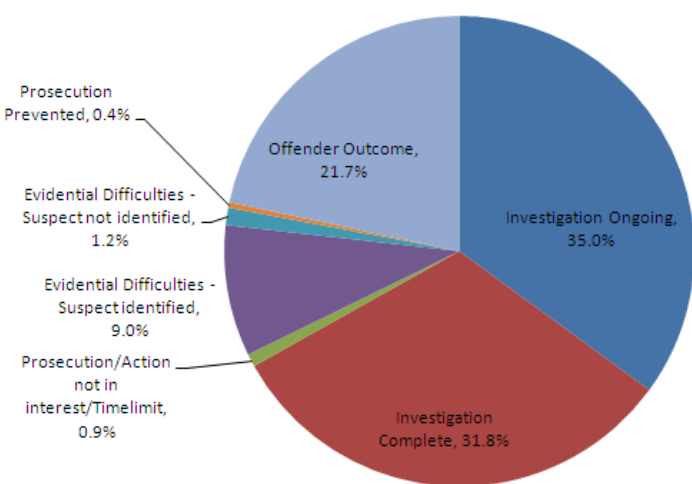
Attainment: Current good performance should be maintained

- The Force is ranked 8th highest nationally for this measure.
- A general increasing trend for the past 5 quarters has been seen.



Secondary Measure: Outcomes

Percentage Outcomes by Outcome Group



Percentage Outcomes by Outcome Group for Total Crime recorded between 01/04/2014 and 06/07/2014.

Outcome Group	Outcome	Number of crimes with outcome	% of crimes with outcome
Investigation Ongoing	Investigation Ongoing	7983	35.0%
Investigation Ongoing	Total	7983	35.0%
Investigation Complete	Investigation Complete: No Suspect - ...	7254	31.8%
Investigation Complete	Total	7254	31.8%
Prosecution/Action not in interest/Timelimit	Not in the Public Interest-CPS	26	0.1%
Prosecution/Action not in interest/Timelimit	Not in the Public Interest - Police	158	0.7%
Prosecution/Action not in interest/Timelimit	Prosecution Time Limit Expired	16	0.1%
Prosecution/Action not in interest/Tim...	Total	200	0.9%
Evidential Difficulties - Suspect identified	Suspect Identified - Evidential Difficulties	1064	4.7%
Evidential Difficulties - Suspect identified	Victim no Support	990	4.3%
Evidential Difficulties - Suspect identified	Total	2054	9.0%
Evidential Difficulties - Suspect not identified	Evidential Difficulties - Victim Declines	272	1.2%
Evidential Difficulties - Suspect not id...	Total	272	1.2%
Prosecution Prevented	Below Age of Criminal Responsibility	27	0.1%
Prosecution Prevented	Suspect too Ill	56	0.2%
Prosecution Prevented	Victim too Ill or Dead	2	0.0%
Prosecution Prevented	Total	85	0.4%
Offender Outcome	Charged/Summonsed	2199	9.7%
Offender Outcome	Youth Caution	98	0.4%
Offender Outcome	Adult Caution	706	3.1%
Offender Outcome	Taken into Consideration	66	0.3%
Offender Outcome	Offender Died	2	0.0%
Offender Outcome	Penalty Notice for Disorder	127	0.6%
Offender Outcome	Cannabis Warning	378	1.7%
Offender Outcome	Community Resolution	1357	6.0%
Offender Outcome	Total	4933	21.7%
Total		22781	100.0%

Victim satisfaction

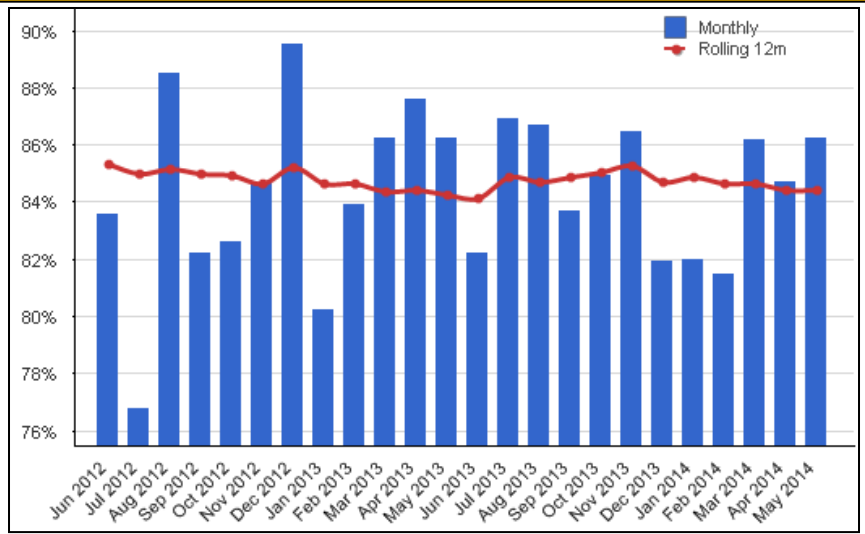


Force survey of victims of burglary dwelling, vehicle offences and violent offence. Sample size set by Home Office.

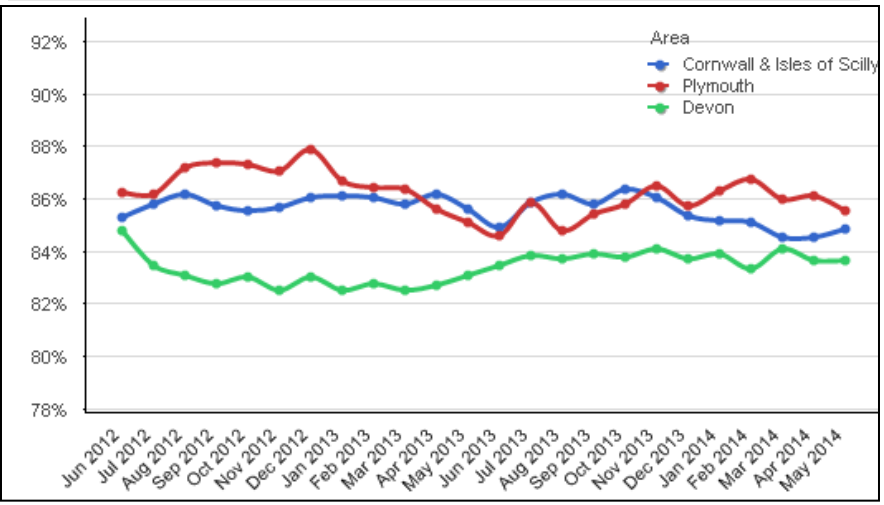
Attainment: Improvement in performance expected

- 12 months to May 2014:
 - Overall Satisfaction: 84.4%
 - Burglary Satisfaction: 88.1%
 - Vehicle Crime Satisfaction: 85.1%
 - Violence Satisfaction: 80.1%
- For the 12 months to March 2014 the National Results vary from 90% to 78%
- For the 12 months to May 2014 Survey Results have a confidence interval of +/- 1.5% at Force level

Force



Area



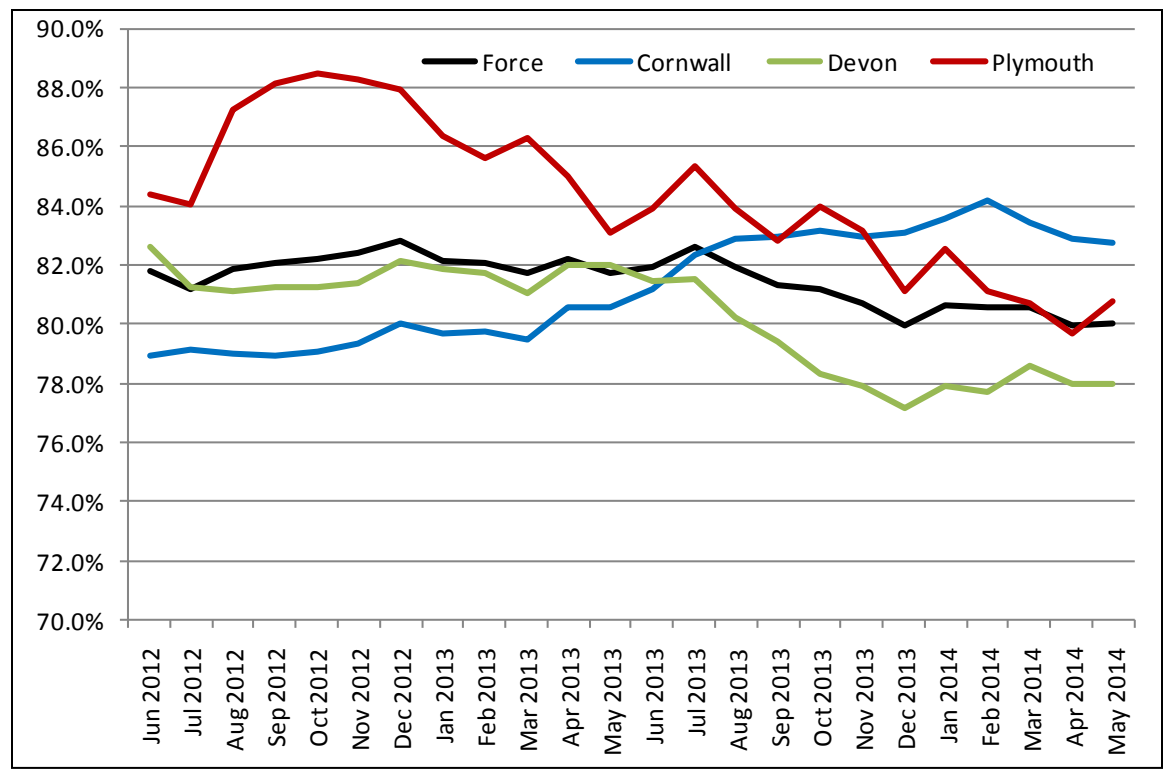
Victim Satisfaction – Violent Crime

Secondary Measure

Attainment: Improvement in performance expected

Force - Satisfaction level 12 months to May 2014: 80.1%
Confidence Interval (Force): +/- 2.3%

12 Month Rolling Trend Over Time



Hours of service provided by Special Constables

Attainment: Improvement in performance expected

The aim is to deliver at least 150,000 duty hours per year, distributed across the Force area.

Data was formally recorded on Dutysheet (national recording tool) from May 2012, prior to which timesheets were held locally and not consistently monitored or managed.

The table below provides the hours of service recorded for the most current period that is available, 12 months to May 2014.

The averages are based on the total Special Constabulary strength being available for and undertaking duties and are purely for indicative purposes.

	Special Constabulary	31st May 2014
	Specials Strength	560
Hours (12 mths to May 2014)	Operational Duties	80395
	Non-Operational Duties	9734
	Training	10643
	Recruitment Assessing	472
	Total Hours	101244
	% Training	10.5%
	Avg Hours Worked (Year)	181
	Avg Hours Worked (Month)	15