



Devon & Cornwall Police
Building safer communities together

Chief Constables Performance Report

March 2015

Devon BCU – Focused Activity

- **PCC's priorities – practical application**
- **Force Strategy: Our Values, Code of Ethics, Leadership – Devon Pledge**
- **Devon Plan 2014-17 – making strategy real**
 - **Putting Victims First**
 - **Prevention**
 - **Targeting Offenders**
 - **Community Based Services**

Devon BCU – Focused Activity

Partnerships

- **Strategic / tactical**
- **Devon Local Strategy**
- **Targeted Family Support**
- **Integrated Health & Social Care**
- **Prevent**

Devon BCU – Vulnerability

- **Changing policing environment**
- **Volume of demand**
- **Priorities**
- **Alignment of resource**

**To provide a high quality
public service focussed
on reducing harm to the
most vulnerable**



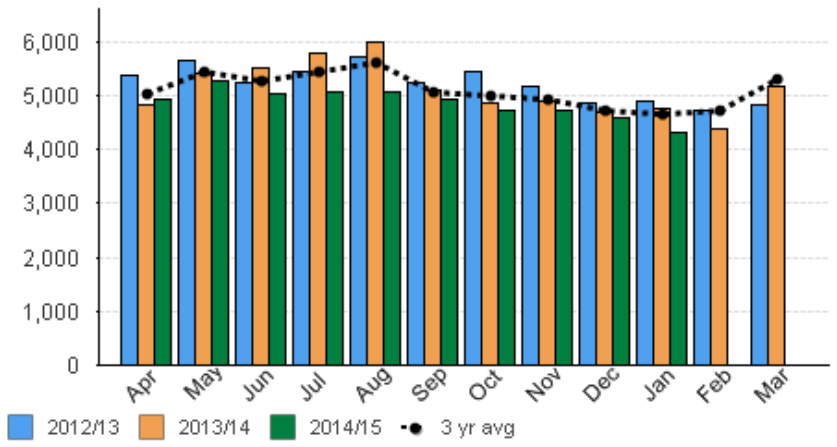
Victim Based Crime

- Homicide
- Violence with/without injury
- Robbery
- Burglary dwelling/non-dwelling
- Vehicle offences
- Shoplifting
- Other theft
- Criminal damage
- (All excluding domestic abuse and/or hate crime)

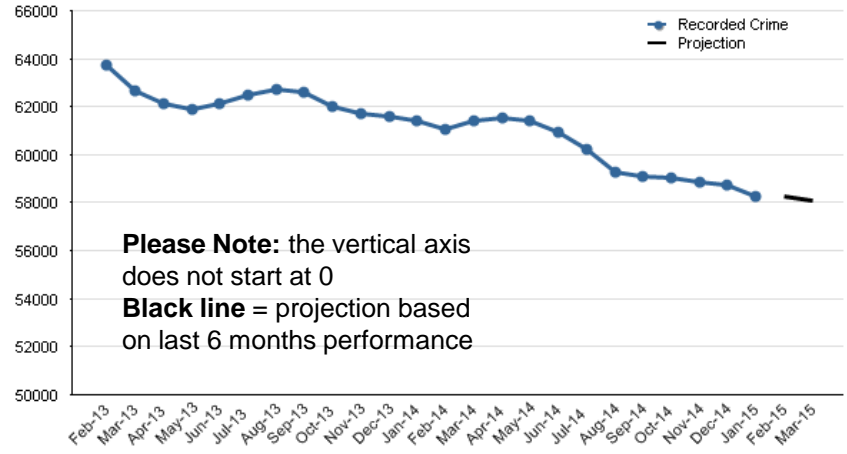
Attainment: Improvement in performance expected

- Long term reductions in acquisitive crime (burglary, robbery and vehicle crime)
- Reductions in criminal damage and other theft over time
- Recent reduction in shoplifting following rise in levels last year
- Performance challenges: violence without injury

Monthly Comparisons



12 Month Rolling Trend Over Time



Domestic Abuse Crimes and Enquiries

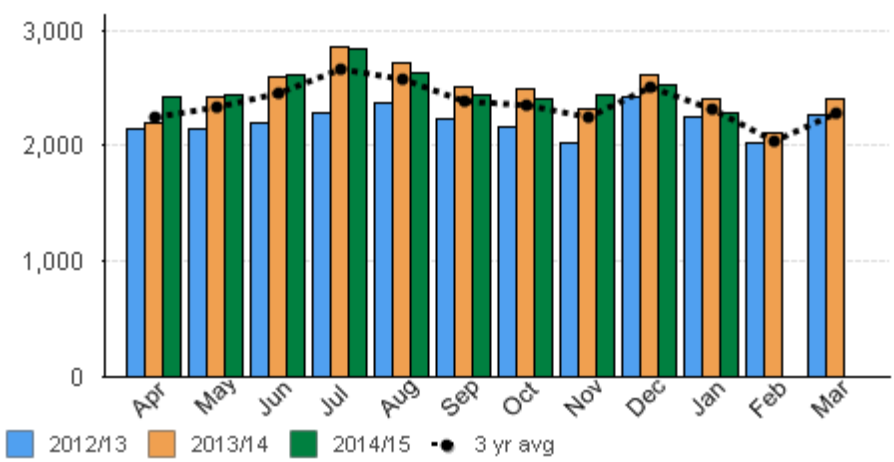


Domestic abuse recorded crime (all crime types) and enquiries. Individual domestic abuse crimes and incidents are flagged at source

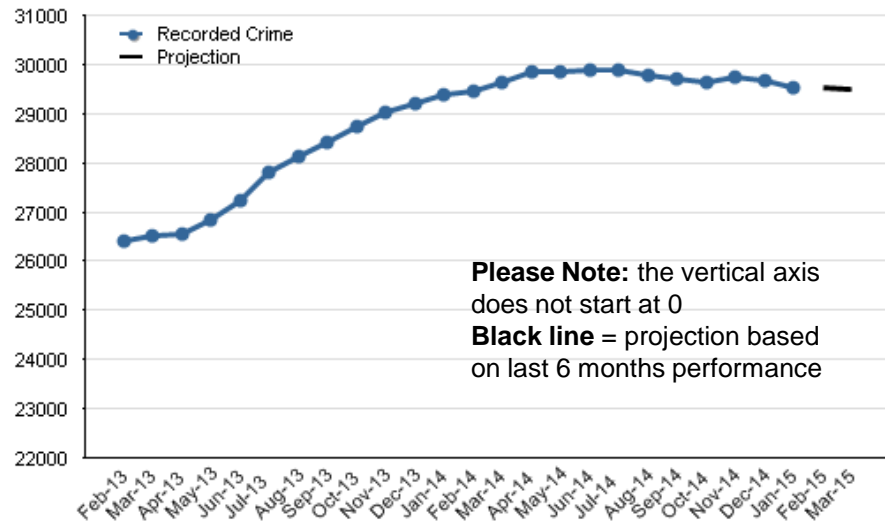
Attainment: Increased public confidence to report

- Increased level of reported Domestic Abuse over time, with supporting outcomes measures for crimes
- Repeat victimisation (repeat within last 12 months)
- HMIC Inspection published and being acted upon
- Action plan being monitored
- Specific Sexual Offence and Domestic Abuse Investigation Teams operational
- Safeguarding pilot completed – final evaluation complete

Monthly Comparisons



12 Month Rolling Trend Over Time



Rape and Other Sexual Offences

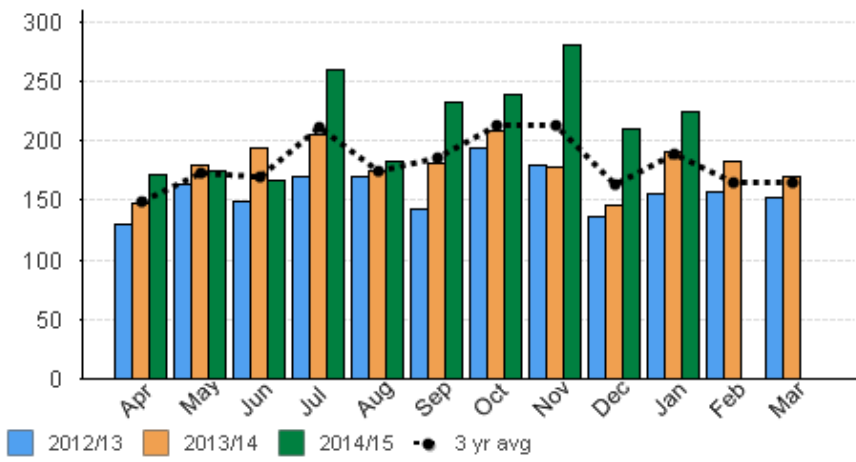


Rape and other sexual offences (including domestic abuse)

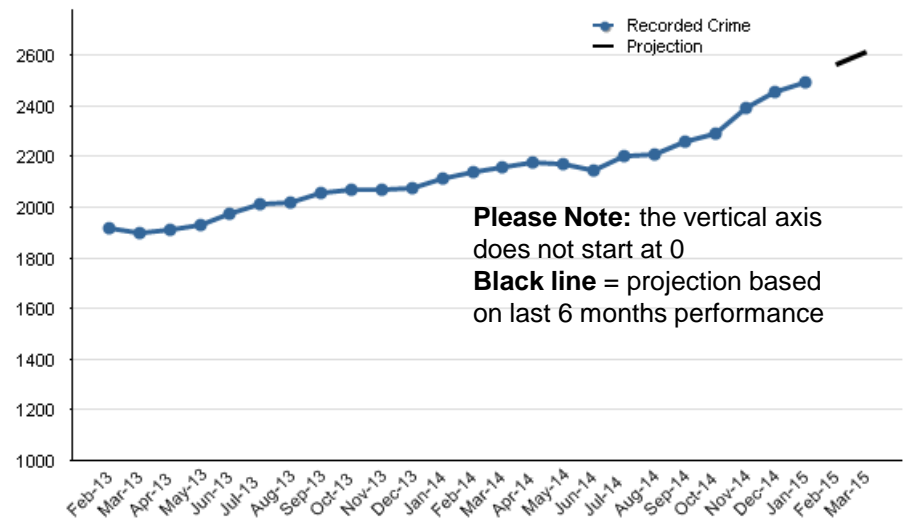
Attainment: Increased public confidence to report

- Increased level of reported sexual offences over time, with supporting outcomes measures for crimes
- Victim satisfaction surveying is being carried out – awaiting appropriate sample
- Impact of Historic and Current Reporting reviewed previously
- Action plan being monitored
- Specific Sexual Offence and Domestic Abuse Investigation Teams operational
- Safeguarding pilot completed – final evaluation complete

Monthly Comparisons



12 Month Rolling Trend Over Time



Priority 1: To make our area a safer place to live work and visit - reducing the likelihood that people will become victims of crime

Hate Related Crimes, Enquiries and Incidents

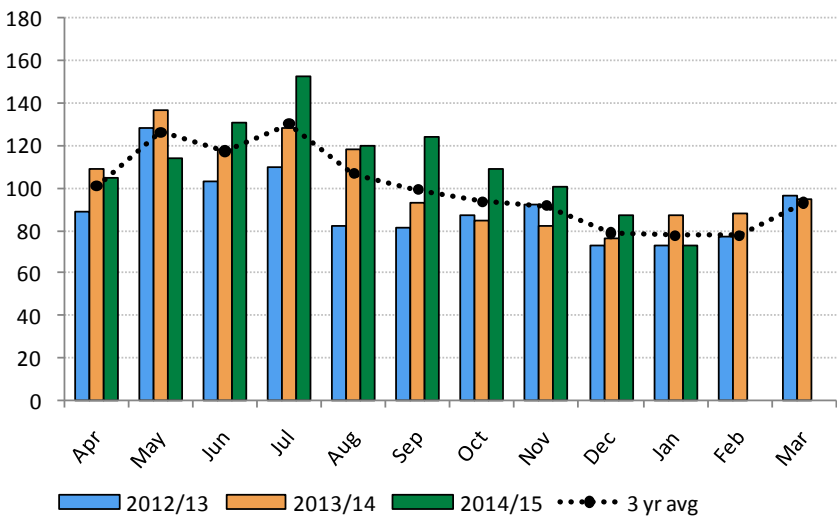


Total number of recorded crimes (including Non Notifiable Offences) and Incidents/Enquiries which are perceived and recorded as a Hate Crime.

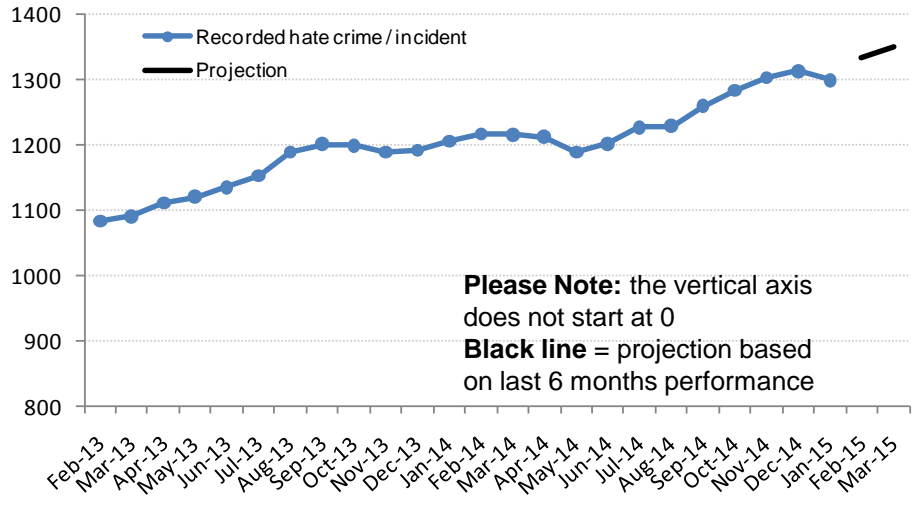
Attainment: Improvement in performance expected

- Over the last 3 years, 71.7% of hate crimes and incidents were racist, 13.6% homophobic and 9.0% disablist
- Increased level of reported hate related offences over time, with supporting outcomes measures for crimes
- Victim satisfaction surveying is being carried out – analysis being completed

Monthly Comparisons



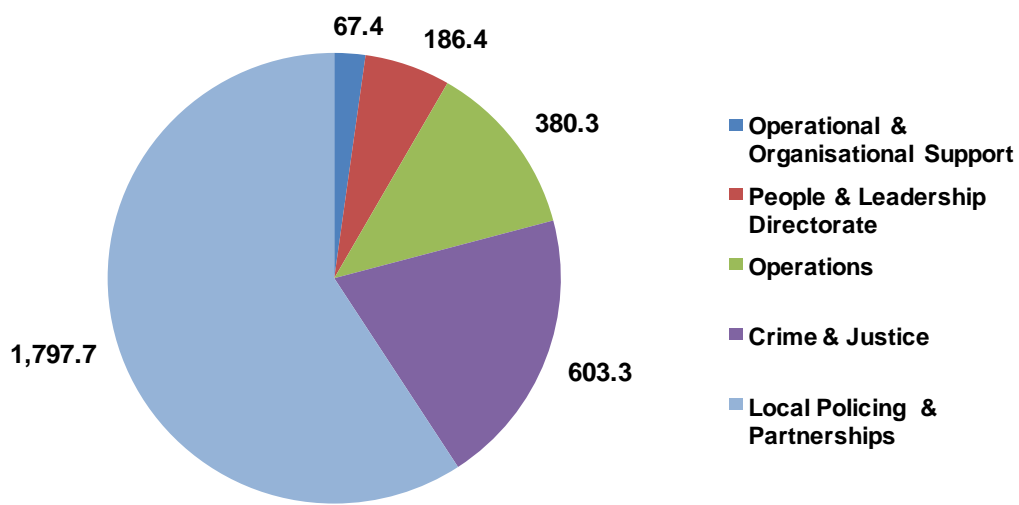
12 Month Rolling Trend Over Time



Police Officer Establishment (over 3000)

Attainment: Current good performance should be maintained

Strength FTE



On 16 February 2015 there were 3052.8 FTE officers

Note: Does not include Career Breaks or Secondments

There are:
27 (headcount) officers on maternity leave (0.9% of officers)
198 (headcount) officers on Recuperative or Restricted Duties (6.3% of officers)

Additional to the 3,052.8 total above we have 10.0 FTE officers on secondment (including for example Operation Zephyr and HMIC) and 16.7 FTE on career breaks

DEEP DIVE: VALUE FOR MONEY - RESOURCING

HMIC Report 2014:

- Frontline policing: 92% of officers in frontline roles
- 75% of our costs are on front line and front line support. We spend less on business support functions than average

Detailed ongoing development of resourcing models to determine match of resourcing to demand

Changing demand over time – Domestic Abuse, Sexual Offending, Mental Health, Cyber Crime etc

Review of Crime Levels, Outcomes and Processes

Violence Against the Person Offences

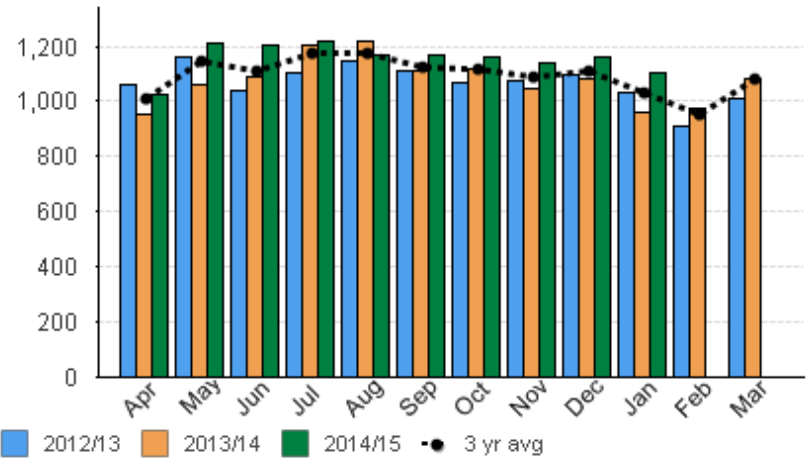


Homicide
 Violence with injury
 Violence without injury
 (All excluding domestic abuse offences and hate crime)

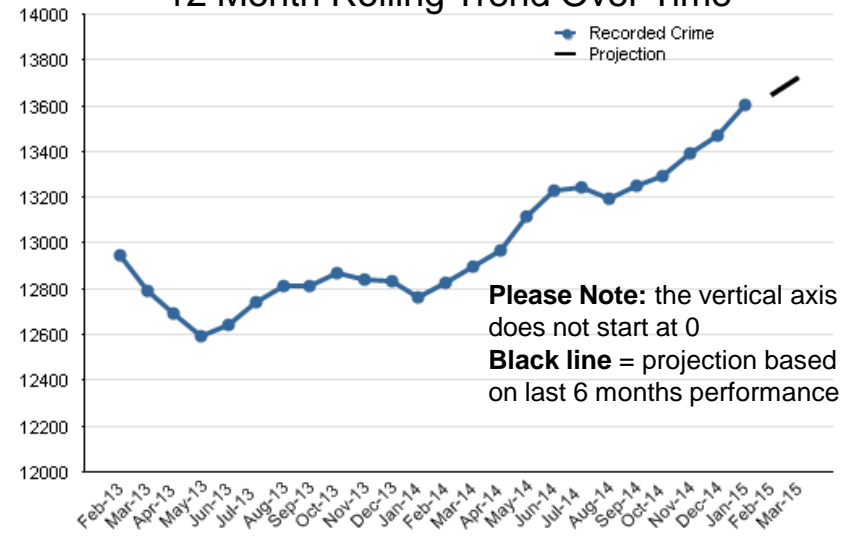
Attainment: Transformation of performance is required

Geography	Recorded Crimes 12 Months to 31/01/15	Per 1000 Population	Recorded Crimes 12 Months to 31/01/14	Per 1000 Population
West Cornwall LPA	1,828	6.9	1,858	7.0
East Cornwall LPA	1,951	7.1	1,797	6.5
Cornwall & Isles of Scilly	3,779	7.0	3,655	6.8
Plymouth LPA	3,409	13.2	3,020	11.7
South Devon LPA	2,694	7.9	2,626	7.7
Exeter, East & Mid Devon LPA	2,318	7.0	2,105	6.3
North & West Devon LPA	1,405	6.6	1,354	6.4
Devon	6,417	7.3	6,085	6.9
Force	13,607	8.1	12,760	7.6

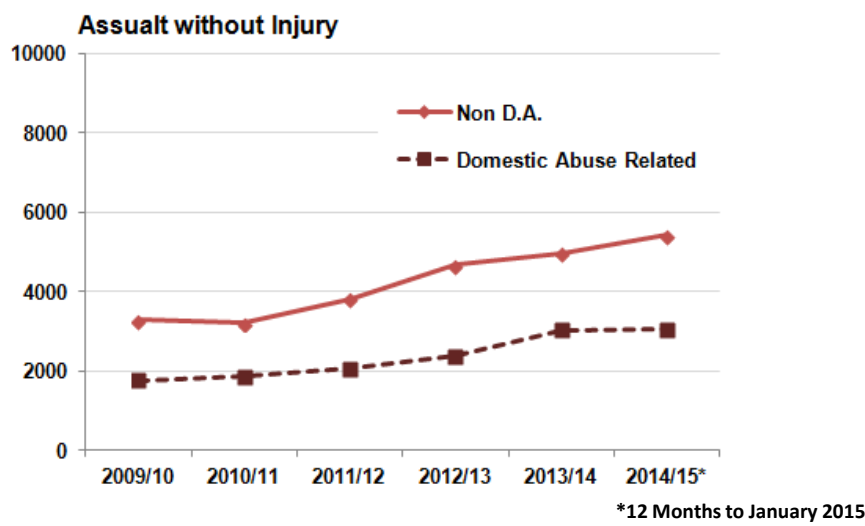
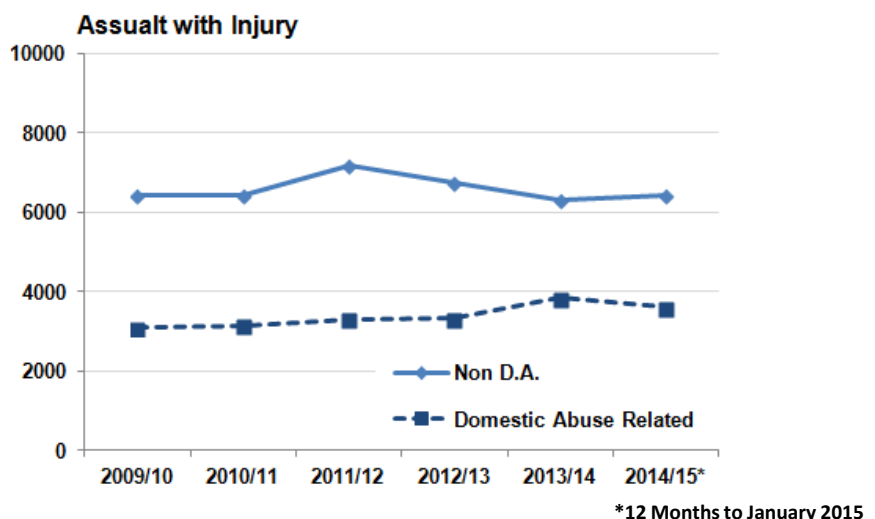
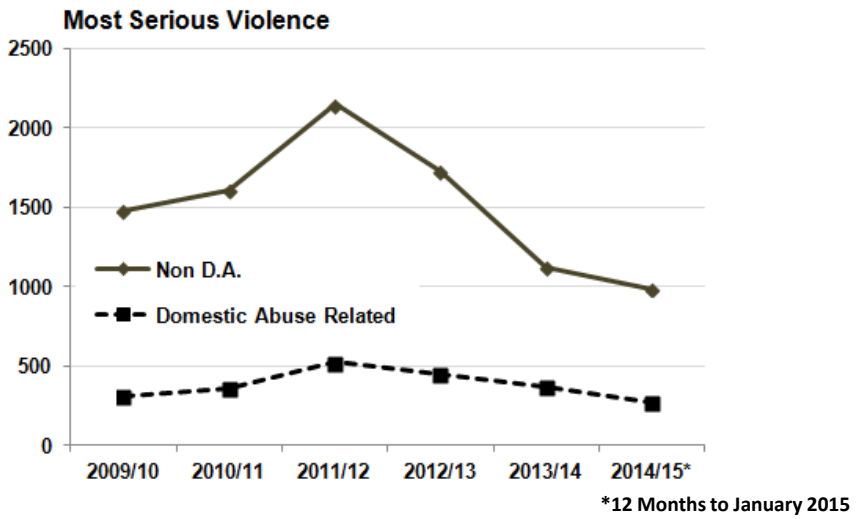
Monthly Comparisons



12 Month Rolling Trend Over Time



Violence Against the Person – Changing Nature:



Understanding:

- Domestic Abuse: 33%
- Nighttime Economy: 19%
- Adults Public Place: 20%
- Adults Behind Closed Doors: 13%
- Under 18 Victims: 14%

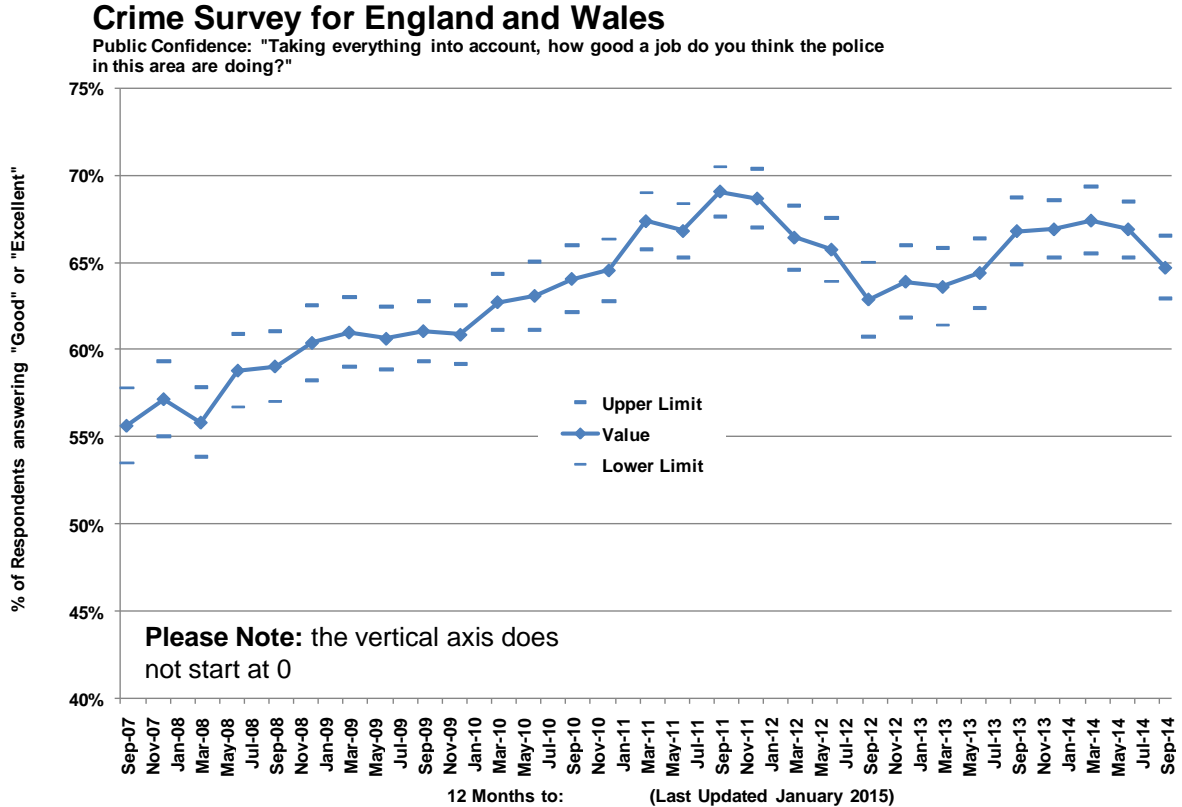
Public Confidence



Taken from the Crime Survey for England and Wales question: "Taking everything into account, how good a job do you think the police in this area are doing?"

Attainment: Current good performance should be maintained

- The Force is ranked 14th (a decrease of seven places compared to June 2014 results)
- The Forces result has decreased by 2.2%pts (from 66.9% in June 2014 to 64.7%)
- Compared to the same period a year earlier, the percentage level is not statistically significantly different



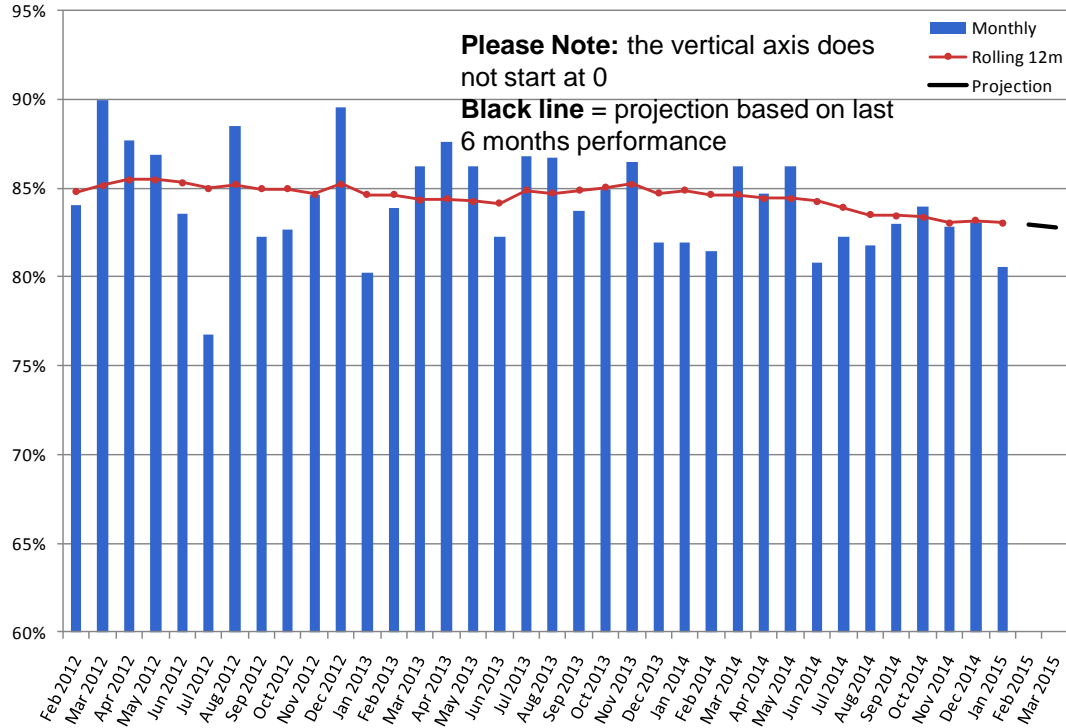
Victim satisfaction



Force survey of victims of burglary dwelling, vehicle and violent offences. Sample size set by Home Office.

Attainment: Improvement in performance expected

Total Satisfaction - Whole Experience (Burglary Dwelling, Vehicle and Violent Offences)



- 12 months to January 2015:
 - Overall satisfaction: 83.0%
 - Burglary dwelling satisfaction: 87.9%
 - Vehicle crime satisfaction: 81.4%
 - Violent crime satisfaction: 79.8%
- Satisfaction levels have stabilised in last few months although a slight reduction over last 12 months.
- For the 12 months to January 2015 survey results have a confidence interval of +/- 1.6% at Force level

Hours of service provided by Special Constables

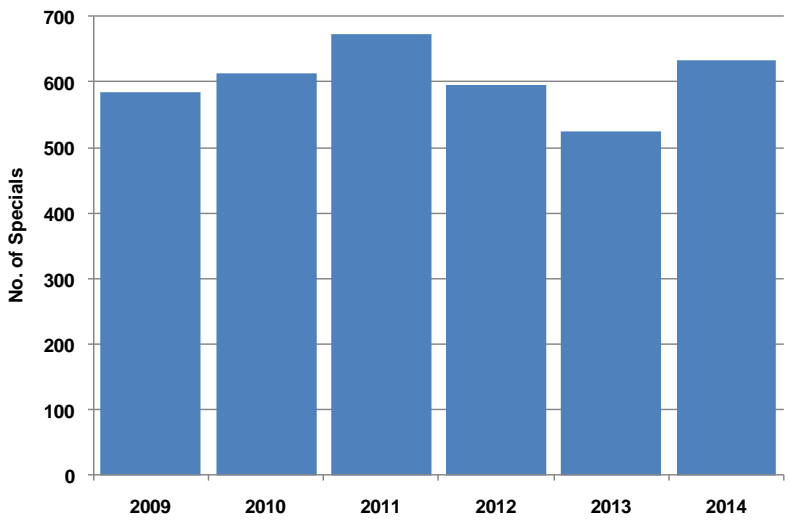
Attainment: Improvement in performance expected

The aim is to deliver at least 150,000 duty hours per annum, distributed across the Force area by the end of the plan period.

Hours worked split between Operational and Non-operational duties.

Special Constabulary	31st December:					
	2009	2010	2011	2012	2013	2014
Specials Strength	585	612	673	595	525	632
Hours	Operational Duties				89114	75109
	Non-Operational Duties				11185	10399
	Training				12033	10778
	Total Hours				112332	96286
	% Training				10.7%	11.2%
Avg Hours Worked (Year)					214	152
Avg Hours Worked (Month)					18	13

Special Constabulary
(Strength as at 31st December for the last 6 Years)



**To provide a high quality
public service focussed
on reducing harm to the
most vulnerable**

