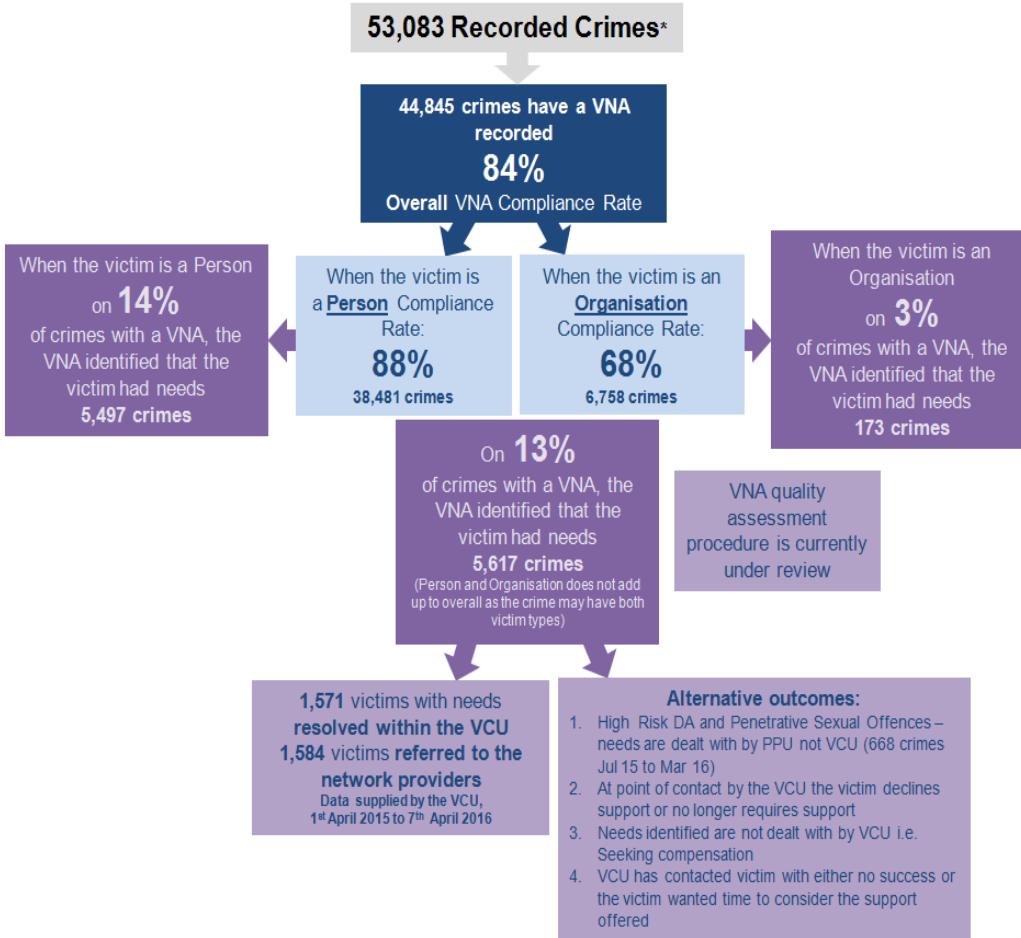


COMPLIANCE SUMMARY

- Analysis shows that VNA compliance for the first 3 months post implementation was significantly lower than subsequent months as the process was 'bedding in'. April to June 2015 data has therefore been excluded from the performance monitoring framework.



***VNA Compliance Rate**

- Recorded crimes only.
- Excludes crimes that have been transferred or cancelled (previously known as No Crimes).
- Excludes crimes where the only victim is Regina and excludes crimes where there is no victim.
- Compliance is based on the number of crimes, as above, with a VNA on UNIFI.

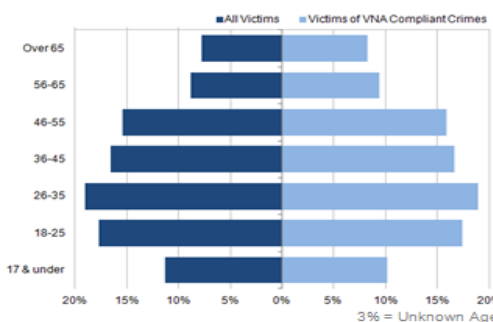
VICTIM PROFILE

The profile for victims of VNA compliant crimes is virtually identical to the profile for all victims of crime.

49% : 48%
3% = Unknown Gender

WHITE : BAME
81% : 2%

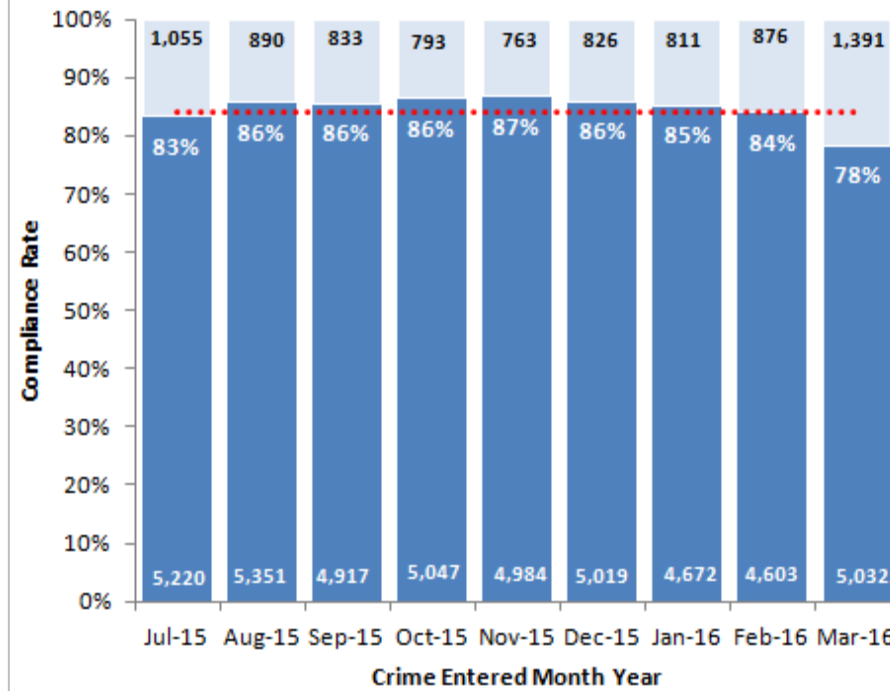
17% = Ethnicity Not Stated



Key

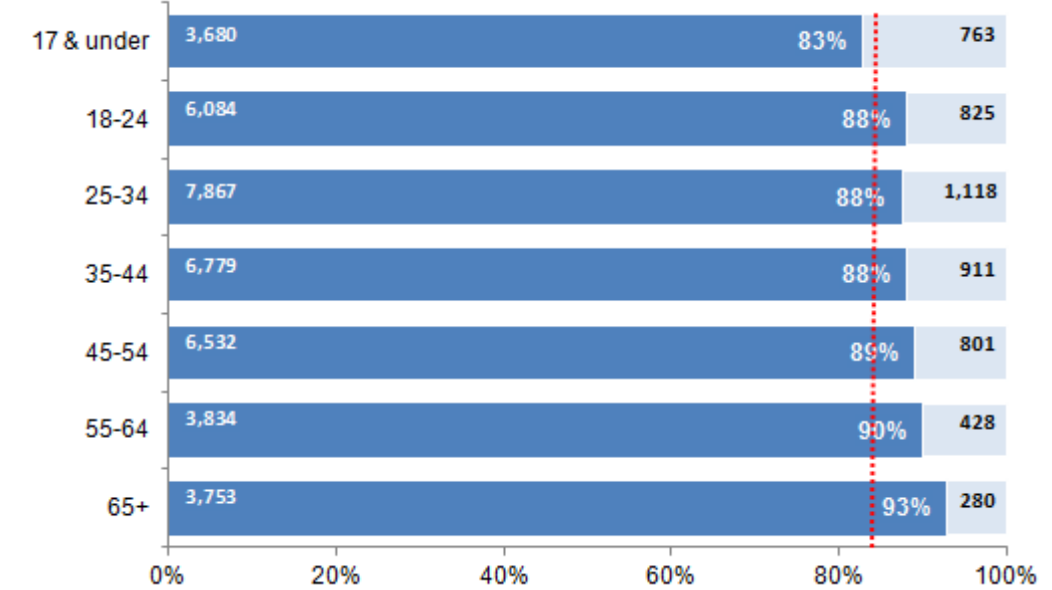
- 1 = number of compliant crimes
- 1 = number of non compliant crimes
- = overall compliance rate

The graph below shows the monthly VNA compliance rate



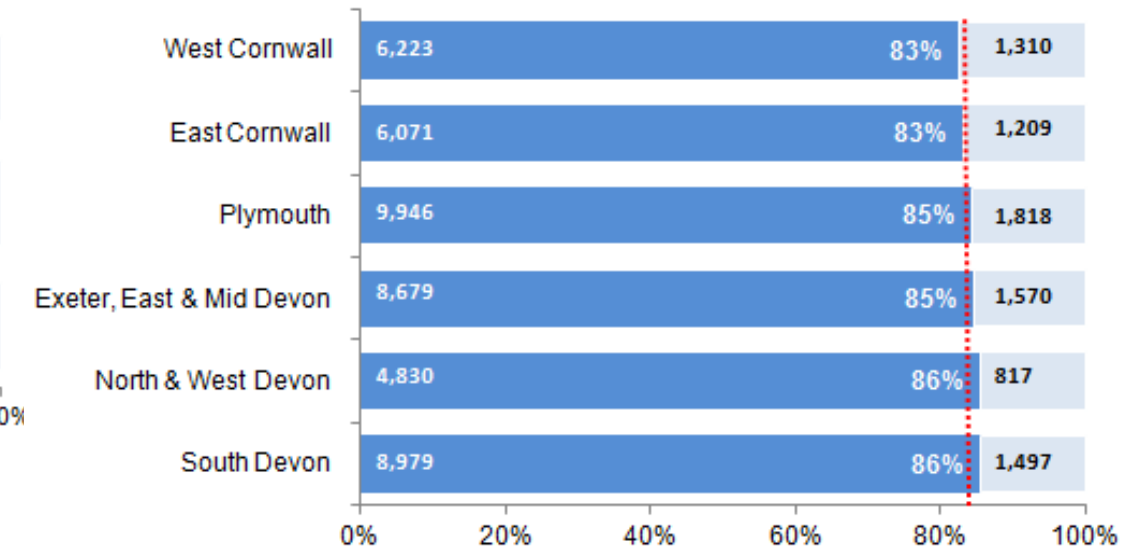
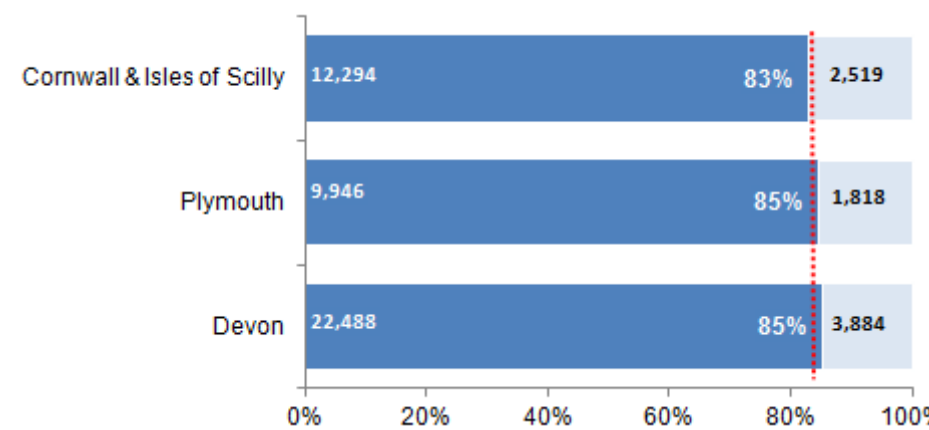
Please Note: Monthly VNA compliance rate may be subject to update, particularly for more recent months, depending on when the VNA is completed.

The graph below shows the relationship between victim age and compliance rate



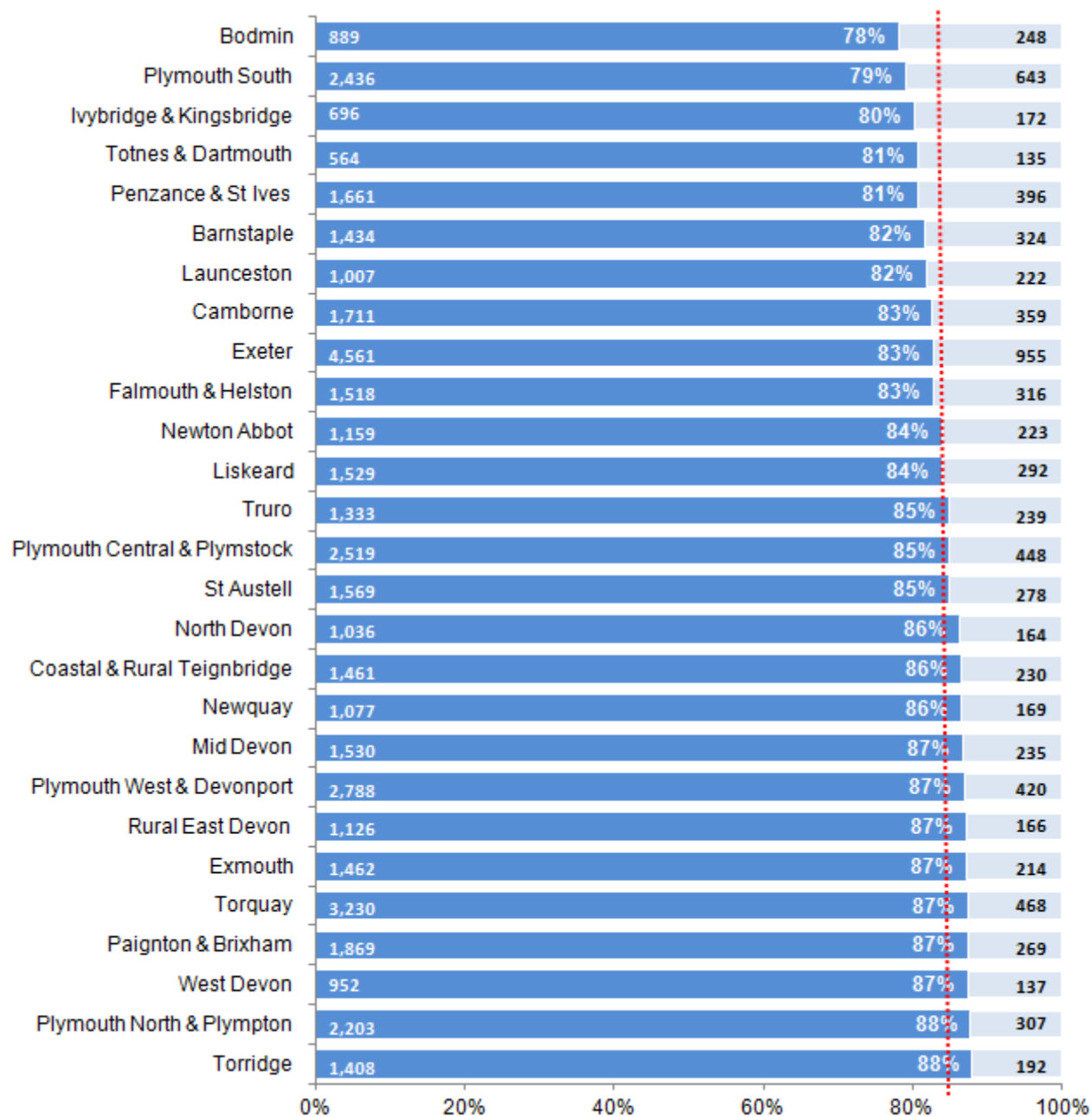
- VNA compliance rate for crimes with a victim aged 17 & under is significantly lower than for crimes with victims in all other age groups.
- In addition the compliance rates for crimes with a victim in the three oldest age groups (45-54, 55-64 and 65+) are significantly higher than the compliance rates for two of the younger age groups (25-34 and 17 & under, compliance is lower but not significantly for 18-24).

The graphs below shows compliance rate by area and LPA (based on Area/LPA of the Crime)



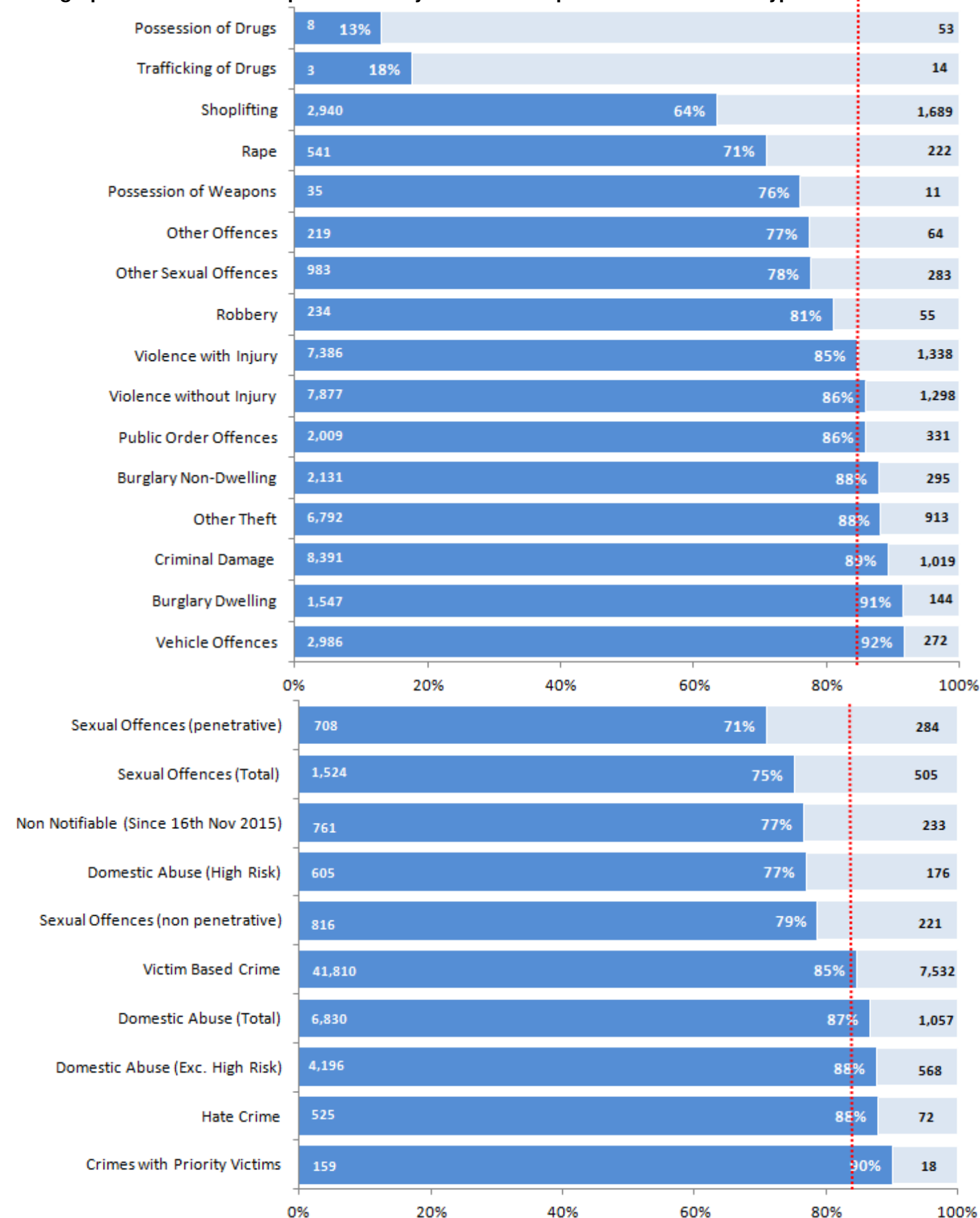
- At LPA level East and West Cornwall are the only LPAs to fall below the overall compliance rate.

The graphs below shows compliance rate by Sector (based on Sector of the Crime)



- Of the 9 sectors with the lowest compliance rates (Exeter to Bodmin) **8 are significantly lower than the overall compliance rate (Camborne is lower but not significantly).**
- They are also **significantly lower than the 12 Sectors with the highest compliance rates: (Torrige to North Devon).**

The graphs below show compliance rate by Offence Group and Offence/Victim Type



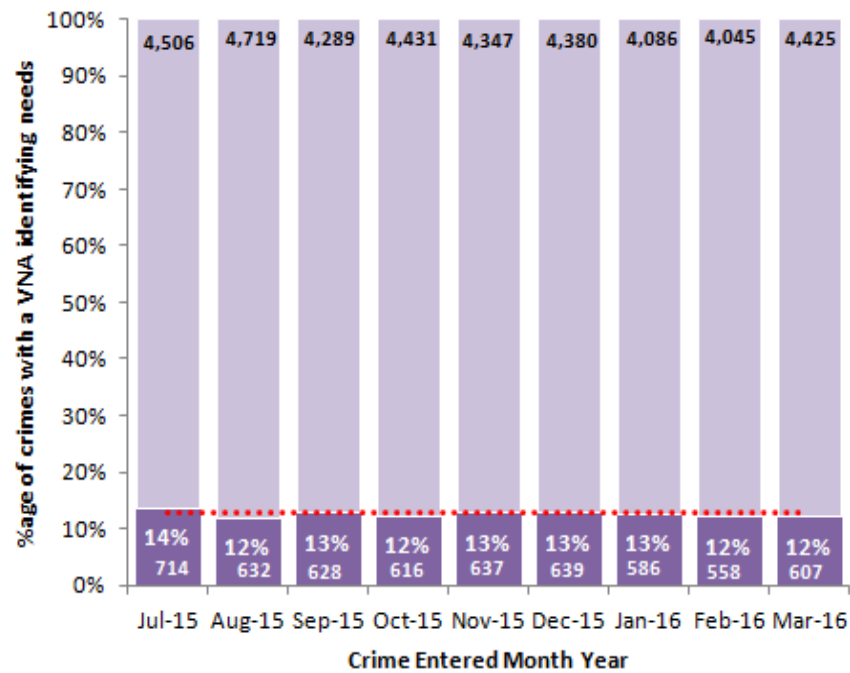
- **VNA compliance rates for Sexual Offences and Rape are of particular concern.**

VNAs WITH NEEDS IDENTIFIED

Key

- 1** = Number of crimes with a VNA identifying needs
- 1** = Number of crimes with a VNA identifying no needs
- ...** = Overall number of crimes with a VNA identifying needs

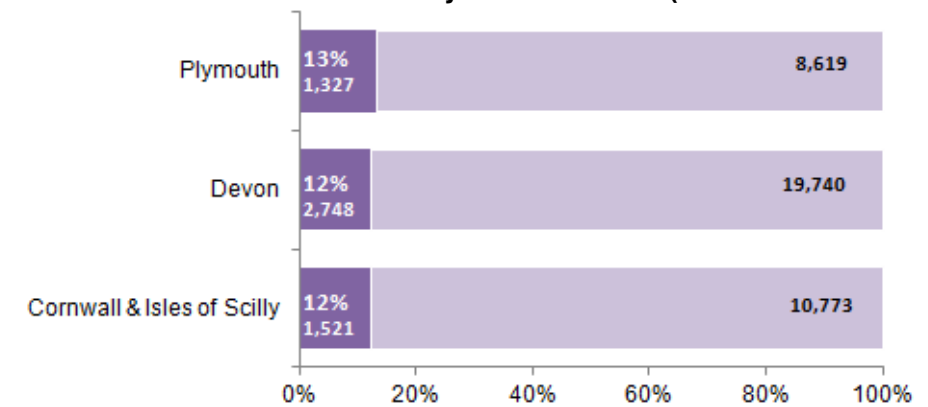
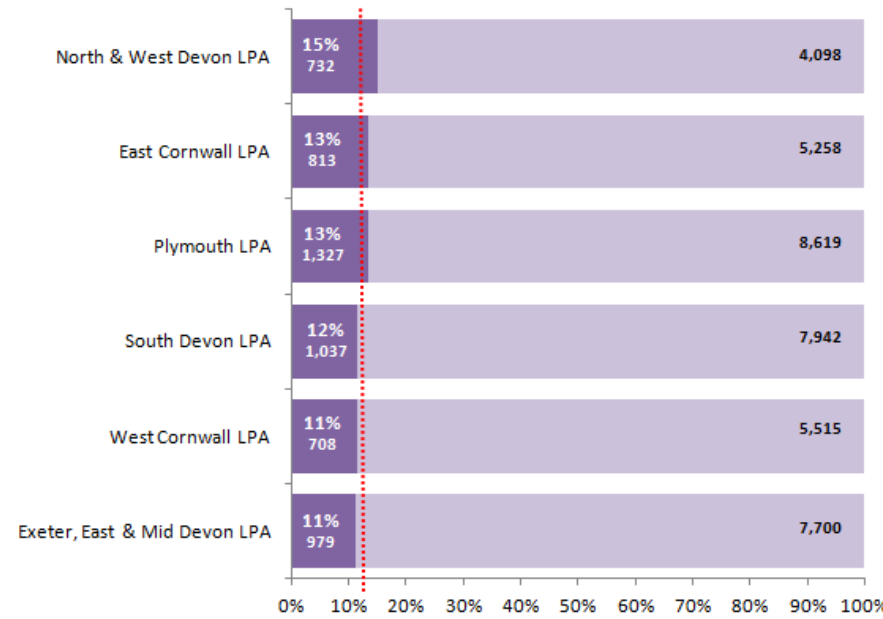
The graphs below show, of those crimes with a VNA, what percentage had a VNA that identified needs



Please Note: Monthly figures may be subject to update, particularly for more recent months, depending on when the VNA is completed.

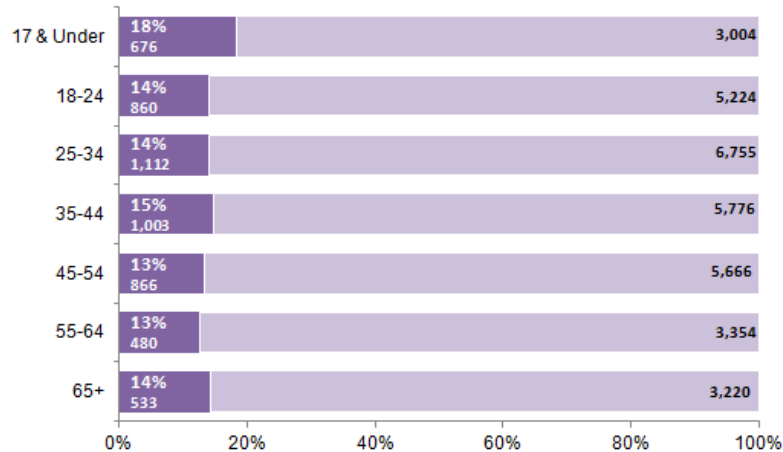
The graph below shows, of those crimes with a VNA, what percentage had a VNA that identified needs by Area and LPA (based on the area/LPA of the Crime)

- Plymouth** has a significantly higher percentage of crimes with a VNA that identify needs than Devon.

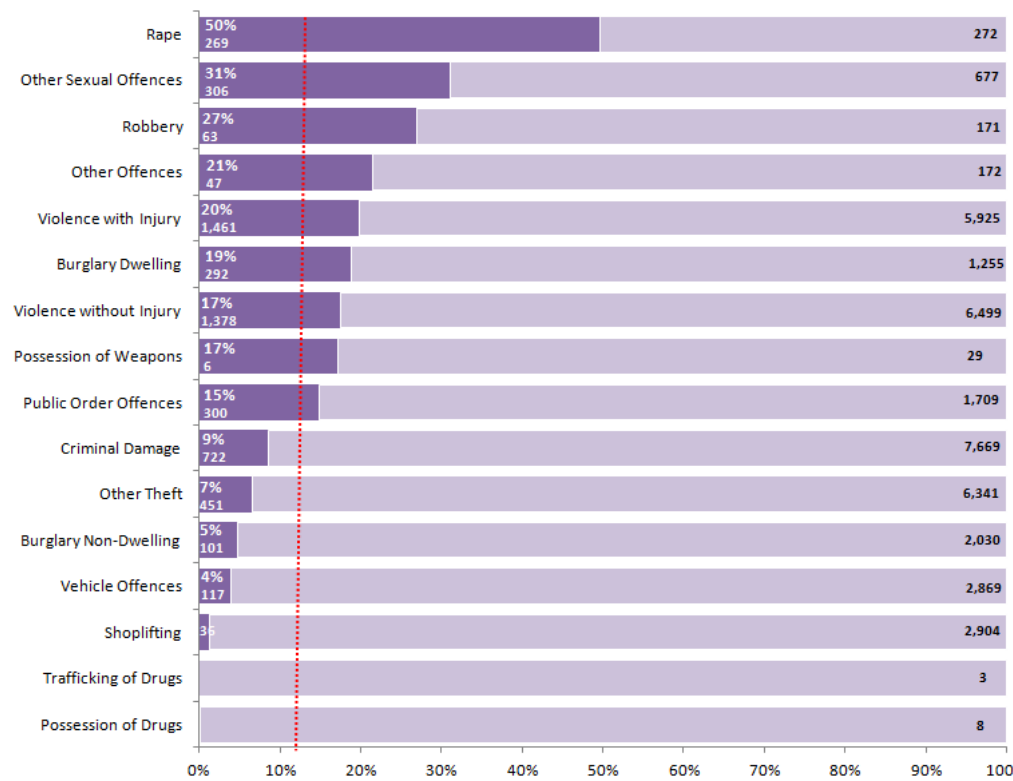


- North & West Devon** has a significantly higher percentage of crimes with a VNA that identify needs than 4 other LPAs (Exeter, East & Mid Devon, West Cornwall, South Devon and Plymouth).
- The **3 LPAs** with the highest proportion (North & West Devon, East Cornwall and Plymouth) of VNAs that identify needs are significantly higher than the 3 with the lowest proportion (Exeter, East & Mid Devon, West Cornwall and South Devon).

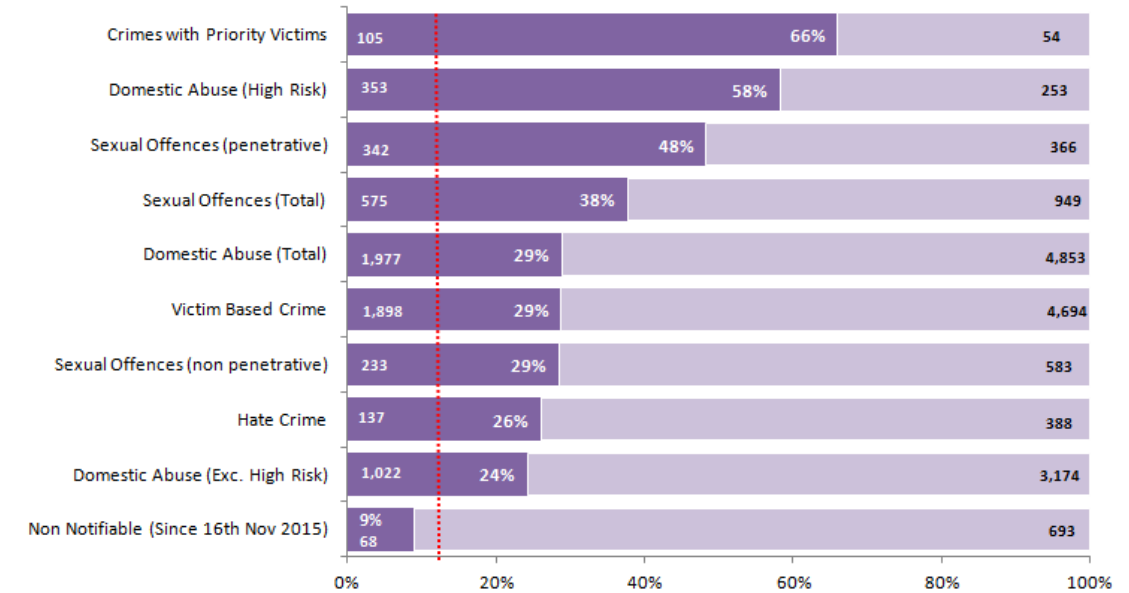
The graph below shows, of those crimes with a VNA, what percentage had a VNA that identified needs by the victims' age



- The proportion of VNAs identifying needs is significantly higher if the crime has a victim that is **17 & under**.
- Analysis also showed that the proportion of VNAs identifying needs is significantly higher if the crime has a victim that is **Female**.



- It is more likely that victims of Rape and Other Sexual Offences and victims in the 17 & under age group will have a VNA that identifies a need for support therefore the current low compliance rates should be an area of focus.



- The offence group of **Rape** has a significantly higher percentage of crimes with a VNA that identifies needs than total crime and all other offence types.
- Other Sexual Offences** has a significantly higher percentage with needs than total crime.